

FOREWORD BY DR. JOHN F. DEMARTINI
TEACHER AND PHILOSOPHER OF THE HIT MOVIE
"THE SECRET"

A PRACTICAL GUIDE
TO
THE BENEFITS
OF
SCALAR ENERGY

BY
DR. JOHN G. FLORENDO

**A PRACTICAL GUIDE
TO
THE BENEFITS OF
SCALAR ENERGY**

By

Dr. John G. Florendo



CONTENTS

1. Foreword	i
2. Acknowledgements	ii
3. Chapter 1: Warning Signs	1
4. Chapter 2: History Of Energy.....	3
5. Chapter 3 Energy and The Body.....	9
6. Chapter 4 The Importance Of Light and Energy.....	14
7. Chapter 5 Fusion Excel Products and Benefits	18
8. Chapter 6 Case Studies Utilizing FE Scalar Energy	24
9. Chapter 7 Water and FE Scalar Energy	36
10. Chapter 8 Practical Uses of FE Scalar Products	44
11. Chapter 9 Oxygen Therapy and FE Scalar Energy	52
12. Chapter 10 Commonly Asked Questions	58
13. Conclusion	64
14. Autobiography	66
15. References	67

FOREWORD

I have dedicated my life to research and write about the unconditional belief of unlimited possibilities, gratitude and most of all love. I know that Scalar Energy is infinite and part of the origins of life. It is a component of universal intelligence.

This book “A Practical Guide to the Benefits of Scalar Energy” is not only an expression of a great and gifted teacher; it is also a message reminding human beings to acknowledge the existence and the dynamics of energy.

Dr. Florendo breathes life and enthusiasm into his audiences with his enlightening perspectives, humorous observations of human nature and practical action steps. He communicates with an open heart, and souls become inspired and people are motivated into action. He is a man on a mission with a message. His trail-blazing techniques and revolutionary understanding is reshaping modern health care and contributing to the lives of millions.

I have known Dr. Florendo for nearly 20 years as one of my students and a dear friend. He and his lovely wife Debbie have been an integral part of my school the Demartini Institute for Human Behavioral Science. I am grateful to be able to invite you to make this special book a part of your wellness journey through life. It will serve as a guide and reference manual for those in search of the truth.

Dr. John G. Florendo is a leader of the Wellness Revolution!



With love and light,

-Dr. John F. Demartini- Best Selling Author of
“**Count Your Blessings**” and teacher in the hit movie
“**The Secret.**”

*Debbie, Dr. Demartini and Dr. Florendo are all
FE Scalar Energy Quantum Pendant wearers.*

ACKNOWLEDGEMENTS

As I day dream of the magnitude of this endeavor in writing this book in between times with my lovely, beautiful and genius wife Debbie and breaks between my girls Sydney and Athena and their skating lessons or girlie days out with their friends and time outs from my long dog walks with my 4 legged kids and of course in between patient care at my clinic, I realized that the universe has a purpose for all of us. That synergy plays a vital role in guiding us to do things we love and share the blessings of knowledge that we experience throughout our lives. My family and I have lived an inspiring life and being a beacon of light for those in search of health, wellness, longevity, and wisdom. I want to thank those who have shaped my life along my journey from being an Army brat traveling the globe and cherishing memories with my mom, dad and sister moreover the people who I crossed paths with along the way.

To my in-laws, Wency and Jemmy Paule, who have always been there supporting, encouraging, and taking care of the kids when needed and truly introduced me to this product. I love and thank you.

To my entire team at the Unlimited Wellness Institute of Las Vegas, who work and serve others with me, I thank you.

To my patients and friends over the last 50 years all over the world, I have learned much from you and acknowledge you for your friendship and confidence in the excellent care we provide at my clinics and for attending my educational programs and workshops, I salute you.

To Dr. John F. Demartini, my dear friend, whose wisdom and unconditional love have pulled me through some bumpy roads and whose input I always hold valuable. I am eternally grateful.

Thank you to Fusion Excel for developing an unbelievable product that has guided me to an abundant opportunity. I have received miracles throughout this odyssey

and have grown and become more in the process. Thank you to Gloria and Ben Cuaresma for your guidance and friendship.

To Drs. Joseph and Regina Klein, my good friends and editors, who are an integral part of my life, and give me constructive criticism, Thank you.

I also want to pledge through the “Florendo Family Foundation” to the “Hope For Children Foundation”, portions of the proceeds from the sales of this book “A Practical Guide and Reference to the Benefits of Scalar Energy”. I am guided to the cause of inspiring those who are less fortunate and sharing out of abundance to those in need.

Most importantly to my best friend Deb and my girls Sydney and Athena, love you and thank you for keeping me accountable to writing and studying, when I wanted to just sit around and read or just relax! To my Deb and our mutual magic and ever increasing respect, you are my inspiration and love machine! I love you eternally!



“Discovery consists of seeing what everybody has seen and thinking what nobody thought.”

- Albert Szent-Gyorgyi, Winner of the 1937 Nobel Prize in Psychology or Medicine

Chapter 1

Warning Signs!

I write this in the midst of being bombarded with a pollution that is unseen, you cannot smell it, hear, or feel it either. This type of pollution has been causing severe bodily damages, causing cancer, neurological disease, immune system disorders, fatigue, sleep disturbances and a number of other ill health conditions. This pollution is called Electro Magnetic Radiation and Electro Magnetic Frequencies.

By divine design, during the writing of my book, in May 2010 the 10 year Inter-phone study was completed and concluded. It indicated the dangerous connection of cancer cell development and the use of the cell phone and the frequencies and radiation that is emitted from these devices.

At this particular time a few states in the U.S. have mandated that warning labels be placed on newly bought cell phones that indicate “these products may lead to or cause cancer”. I believe this law will be a federal one to protect the consumer and eventually a global law, after studies are published and countries realize the dangers of electro magnetic radiation and frequencies.

In June of 2010, The New York Times ran an article on how San Francisco, California, mandated that the cell phone industry and retailers must display the amount of radiation each cellphone emits. The Federal Communication Commission has determined the Specific Absorption Rate (S.A.R.) to be safely at 1.6 watts per kilogram. This will have a direct affect on the electronics industry, which has a \$190 billion market.

Europe has been one of the first countries to ban the use of cell phones from children under the age of 12. This was due to the recent findings that indicate child brain cancer has escalated to an unbelievable level of 31%! Michael Rich, M.D., M.P.H. a pediatrician researcher from the prestigious Harvard Medical School, has pointed out that the use of hand held game devices used by adolescents, has contributed to the weakening of the immune system and the possible development of disease in young children, due to the EMR and EMF emitted from these game consoles like the PSP, Game boy, as well as cell phones.

Dr. Levy, a neurological researcher from the film Cell Phone Health, pointed out that it is hard to ignore the data. Cell phone use has been detrimental to the human body. Studies done at Max Planck Institute where cell phones were placed around laboratory caged rats for a few hours a day. On follow-up CAT scan 30 days later, it showed bleeding of the blood vessels of the brain. The cell phone is not the only culprit to the damaging effects on the cellular level. Microwave ovens, laptop computers, t.v., home appliances, hand held devices, cars, garage door openers, air conditioners and a host of other products.

What can be done to protect our bodies from this unseen, unheard, unfelt, no smell pollution? The answer: ***Scalar Energy.***



"The important thing in science is not so much to obtain new facts as to discover new ways of thinking about them."

- Sir William Bragg, Winner of the 1915 Nobel Prize in Physics

Chapter 2

History of Energy

Understanding the forces that steer the universe, and trying to unify them into a single explanation of everything, most of the greatest strides have been made in the past two centuries. In the mid-nineteenth century, the brilliant Scottish physicist James Clerk Maxwell demonstrated that electricity and magnetism are integrally connected and that the relationship between them could be expressed through a set of four simple equations. Maxwell's equations are so succinct they can literally fit on a T-shirt as evidenced by a popular fashion choice at many physics conferences or trade shows. These relationships offer a startling conclusion that all light in the world from brilliant yellow hues of sunflowers to scarlet shades of sunsets, consists of electromagnetic waves-electricity, magnetism and light working in tandem produced-Scalar Energy. The combination of

these components, just like the formation of the earth by generation and bombardment of atoms forming energy, the collision course set by Maxwell, which led to Nikola Tesla, Albert Einstein and Heinrich Rudolph Hertz, and Andrija Puharich to study and investigate the power of Scalar Energy, has now exploded into a revolutionary new health and healing dimension.

It was Nikola Tesla who was in the forefront of understanding electromagnetic energy and Scalar and understood the relationship with cellular health and function to optimal cell charge. He also developed transmitters that harnessed energy from the earth, which illustrated the originating theory of Scalar and the start of a new frontier. His studies and findings were so far in advance, that even today we are marveled at the value of his work.

The progress of science is the discovery at each step of a new order which gives unity to what had long seemed unlikely. Faraday did this when he closed the link between electricity and magnetism. Clerk Maxwell did it when he linked both with light and called it Scalar. Einstein linked time with space, mass with energy and the path of light past the sun with the flight of a bullet; and spent his dying years in trying to add to these likenesses another, which would find a single imaginative order between the equations of Clerk Maxwell and his own geometry of gravitation. Science is nothing else than the search to discover unity in the wild variety of nature or more exactly, in the variety of our experience. Nikola Tesla took the visions he had and applied them to theory and developed alternate currents, earth energy possibilities that we are all benefiting from to this day. The formula for Scalar Energy discovered by James Clerk Maxwell is as follows;

$$\begin{aligned}\nabla \times H &= \epsilon_0 \delta E / \delta t + j \\ \nabla \times E &= -\mu_0 \delta H / \delta t \\ \nabla \cdot H &= 0 \\ \nabla \cdot E &= \rho / \epsilon_0\end{aligned}$$

We live in a three dimensional world and scientists are starting to see that we have four dimensions! Those who study the quantum and truly understand energy will identify some of the research points out the energy vacuum and the enormous potential of generating power. It is this power that Scalar Energy is derived from. Electrical, magnetic, and light are what form the foundation for Scalar. Another name associated with Scalar Energy is Radiant Energy or Subtle Energy. Energy consists of particles we call Electrons and Protons or Positrons.

These particles all have mass and mass has energy and energy is mass. A particle must have a minimal amount of energy. This is called rest mass energy and is essential for particles to exist and be free and able to move around. If particles want to have mass, they must find the energy to function. If it does find the energy, any left over energy can be used for other things. Not all particles bother with having mass. A photon has no rest mass, so a photon at rest would not weigh anything. Rarely do you see a photon at rest, they are forever rushing around at the speed of light, hence light is made up of photons.

Light is made up of little packets of quanta, or energy. In quantum mechanics we are dealing with the amounts of energy that are generated within the atom. The central figures of quantum reaction are the detection of particles and the interference of those particles. Particles or quanta are usually in one place rather than spread over a big area and can be illustrated by the arrangement of the atom. For example the look of a crystal or water that has been exposed to Scalar Energy and there will only be one electron present in that formation.

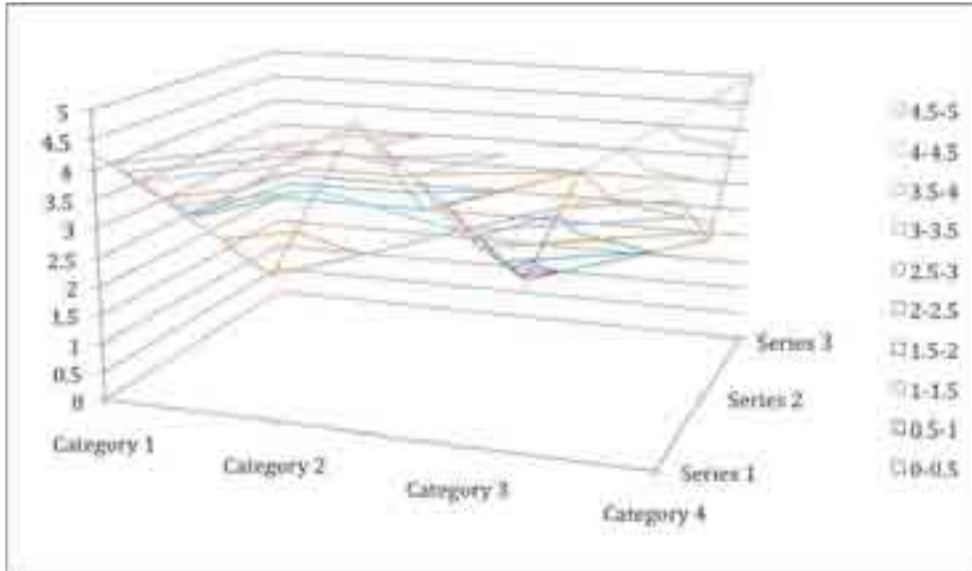


Fig. 1

In quantum science, all objects are described in wave functions and we can calculate and predict some features or categories of particles and energy by knowing and identifying wavelengths and frequencies and their levels or categories of tone and resonance. (Illustrated in Fig. 1)

Quantum mechanics forced itself upon science accepted at the turn of the century. A quantum is a quantity of something, a specific amount and mechanics is the study of motion. So “quantum mechanics” is the study of the motion of quantities. Quantum theory is that nature comes in bits and pieces (quanta), and quantum mechanics is the study of this phenomenon. Quantum mechanics studies the subatomic realm, the invisible universe embedded in every thing around and in us.

Total energy consists of potential and kinetic. The potential energy in the Fusion Excel Quantum Healing Pendant, is increased when the fusion of the 76 minerals are performed using kinetic energy. The tiny amount of zero point energy or Scalar Energy that exists in a quantum object thanks to the wave nature of matter, is enhanced with technology that bonds 76 minerals, which is called Barrier Penetration or Tunneling. Solid objects of particles interact with the atoms of another and form potential

energy enormous for one object inside another. It is like putting a second dog inside a kennel that already has a dog in it, especially an unfriendly one! You will have chaos getting the other dog inside, but the extra energy generated when you do, in the form of growling, barking and snapping is like the Fusion Excel Quantum Products! Power!

The Tunneling and Barrier Penetration process that uses the kinetic energy of an electron outside the Fusion Excel Quantum Pendant, is larger than the inside particles and can convert most of its energy into potential energy. The incoming electrons that are generated by the Fusion Excel Technology are more energized and have more momentum to penetrate the forbidden region or interior of these products.

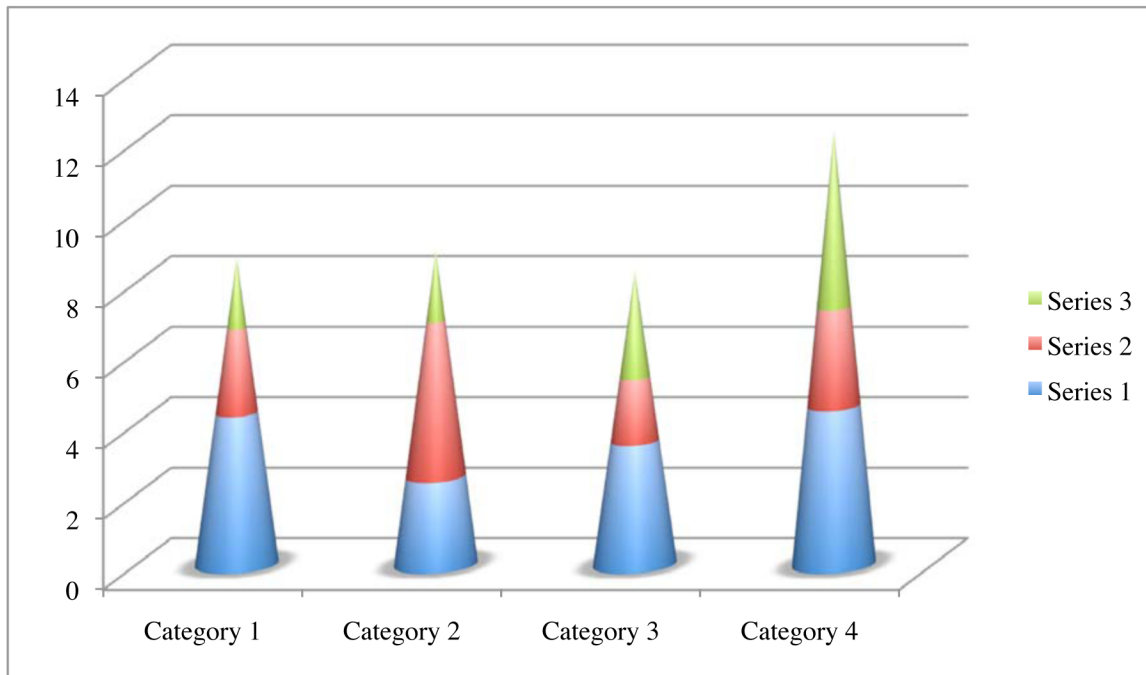


Fig. 2

These waves of energy from the electrons can penetrate through even metal and can enter the center of the products. The Scanning Tunneling Microscope (STM) with its sharp tip is positioned close to the Fusion products, (Similar to the visual in Fig. 2) while electrons from the tip will tunnel across the gap between the products and produce a small electric current that is amplified and then measured. The amount of current depends very sensitively on the distance between the tip and the surface, allowing

a reconstruction of the surface sensitive enough to detect single atoms. It consists of electrically conducting material that when brought within a few nanometers of the surface, allows the electrons to tunnel from the tip of the STM into the Fusion Excel products. This unique process has revolutionized the energy industry!

Energy is like money. You can have it in different forms like savings, gold, coins, etc. In actuality money is energy. One form of energy can convert into another, like depositing cash into your bank account and writing a check to purchase something. This is exactly what occurs during the process of fusion of the electrons of the 76 minerals that are bonded and then penetrate the surface to make incredible structures, the Fusion Excel Quantum Pendant, Bracelet, Flask, Watch and Soap, with many more products to come!

Here are some of the products that are manufactured by Fusion Excel International. These can be bought from any distributor for the product or from the main office in Malaysia. Fusion Excel is one of the fastest growing multi-level marketing companies in the world. If you are a networker or would like to know more about this company please call the main office for Fusion Excel in your country or state.





“The human body is the best picture of the human soul.”
- Ludwig Wittgenstein

Chapter 3

Energy and the Body

The practical uses for these products have been demonstrated in my office, The Unlimited Wellness Institute, with all the miraculous changes that have occurred with patients suffering with specific health issues. Again, these products make no guarantee or effectiveness. Fusion Excel does not want to mislead you, but wants to educate you to the benefits and power that can be enhanced using the quantum health products.

The foundation of Fusion Excel is based on the quantum mechanics and physics as mentioned previously. When we investigate the formation of the earth be it the big bang theory of particle mass collision forming energy or the God, universal intelligence, supreme-being development of the earth, both theories express the existence of energy. Dating back to 300 and 400 BC, we know of philosophers and scientist that studied and knew that there was intelligence, infinite energy and that there was a reason why the

earth rotated around the sun. Their theories and studies were not always accepted and the truth was in most cases ostracized and they were labeled as rebels against the church and its teachings. In the case of Giordano Bruno, burned at the stake for his beliefs. The advanced ideas of brilliant minds like Galileo and Copernicus were down casted as to not bring any other thoughts about the universe and any attention away from the church then. Their main thoughts included the conclusion that the earth revolved around the sun and that there was an enormous galaxy outside of our own existence. It is the sacrifice and the persistence that these magnificent minds made, that have lead to the development of the science we know today.

Even today Energy Medicine or Energy Healing has its skeptics and nonbelievers. My saying is “ those that believe, no proof is necessary and those that don’t believe no proof is ever possible.” This just illustrates that what people are not familiar with or understand, they have a tendency to doubt, and those that get a glimpse of the idea, will tend to attempt to understand or at least believe in the possibilities. This is what we call having an open mind or open mindedness.

Figures 3 and 4 illustrate the Scalar Energy wave pattern as a circular pattern that scales from one concentric sphere to another. Electrical and magnetic energy travel at the speed of light and are linear. Scalar is an infinite form of circular subtle energy, has unlimited potential and power and is faster than the speed of light.

Fig. #3

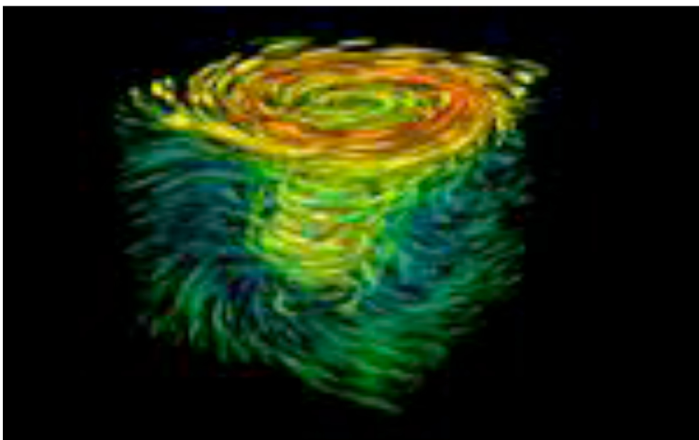
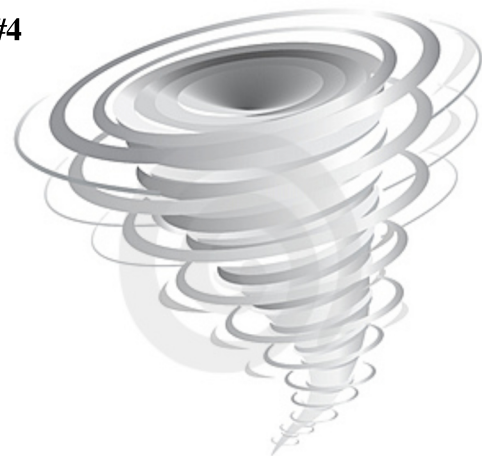


Fig. #4



I am director of the facility The Unlimited Wellness Institute, in Las Vegas, N.V. I have been practicing Chiropractic Neurology and Brain Based Therapy for nearly 30 years. I also developed one of the largest family chiropractic practices in New Jersey from 1985-2005. Our focus was wellness care and we took care of day old infants to 106 years young friends. They were some of my most memorable times in health care and I truly appreciate the opportunity to care for all the families that were my friends and patients.

During my years of being in the health industry, I realized that health problems, from the typical lower back and neck pain to the headache, vertigo, and dizziness to the depressed immune systems and postural distortions, that one of the major connecting factors was energy. If their energy levels were low or non-existent there was a likely chance of them having a body signal or symptom. In chiropractic our goal is to not treat the symptoms, but to correct the cause of the sign or symptom. If that signal originated at the central nervous system, there was a definite chance that I could locate the blockage or interruption in the nervous system, which chiropractors call a Vertebral Subluxation Complex (VSC), and remove the interference with an adjustment or corrective procedure. The one thing that always crossed my mind was why wouldn't that correction stay corrected? What was the factor that may cause that VSC to continue to return? Was it due to a physical, chemical or emotional issue? Was there a fall or accident, a drug or chemical, or stress in their life that exacerbated their conditions? Was it their environment? The more and more that I researched the period and the conditions that I saw, I was amazed at over the last 25 years, I started to see increasingly more neurological based conditions.

Multiple Sclerosis, Cerebral Palsy, Parkinson's Disease, ALS, Macular Degenerations, Cancer, Circulatory Problems, Arthritis, Diabetes, etc., were starting to show up more frequently. I wanted to know why this was occurring much more often and how it was affecting so many more people. I even watched 2 good friends deteriorate from Multiple Sclerosis and Amyotrophic Lateral Sclerosis (ALS) and I could do nothing, but pray and watch them whittle to dust. I needed to research and study more on why.

Then I came across some interesting studies on the dangers and exposure to Electro Magnetic Radiation (EMR) and Electro Magnetic Frequencies (EMF). I was amazed and shocked that I hadn't heard more about this pollution. I also saw the dangers that were lurking in the shadows with the public and the potential health care crisis developing.

The statistics have been staggering over the last 20 years.

- Over the last 20 years there has been a staggering increase in cancers 60%.
- There has been 21% more brain tumor development in children.
- Testicular cancer and sterility in men has grown to a total of 51%.
- The occurrence and development of neurological diseases such as Parkinson's Disease, Multiple Sclerosis, ALS, Alzheimer's Disease, Myasthenia Gravis, Dementia, and degenerative brain disorders has increased.

The development of the cell phone has been revolutionary in electronics as well as health and disease. A recent article ran in a famous publication, GQ Mens Magazine, identified the dangers of the cell phone to the brain. It was linked to the dangerous cancer causing cigarette and the electro magnetic frequencies that are emitted from our cell phones. It was one of the only publications that identified the link between cancer and the use of the cell phone. Is it by coincidence that during that time of electronic explosion during the early 80's into the late 90's that we started to see the development of these disorders in the human body?

When the human body is being bombarded by EMR's and EMF's on a daily basis over a long period of time, can this contribute to the disruption of cellular function and atomic reaction? Can this loss of cellular energy and vibrancy be one of the major causes of sickness and disease in the world today? I believe it is and I will illustrate some of the facts from studies done with Scalar Energy, electro-magnetic-light energy and properties and light waves over the next few chapters.



Fig. 5

Could cell phones and electro magnetic frequencies and radiation contribute to the deterioration of the body on a cellular level? Could this lead to tumors, cancers, or dangerous neurological conditions? Who will take the responsibility for the warnings and the protection from these frequencies? Are these possibilities of danger to the human body of any value to you? How about to your children or grand children?

In May 2010, as mentioned earlier, the Interphone Study was completed and the results were broadcast over the world on the findings of these tests. I have included those findings in this book from the latest studies that have been forward to me done by one of the researchers in the study group. I also contacted by email the Larry King Show, as well as the researchers that presented on his show in May 2010, and have gotten responses from them that they are very interested in knowing more about Scalar Energy and Fusion Excel and the benefits of these products.

Elevated risks of glioma among heavy phone users

There was some evidence of an elevated risk of glioma, which is a neoplasm development found in various types of cells that form the interstitial tissue of the brain, in the highest decile of cumulative call time, with the highest point estimates seen for tumors in the temporal lobe and for subjects who reported having used their mobile phone mainly on the same side as that on which the tumor occurred. We explore here possible interpretations of these findings. Excessive cell phone use may cause tumors.



“The important thing is not to stop questioning. Curiosity has its own reason for existing.”

- Albert Einstein-Winner of the Nobel Prize in Physics

Chapter 4

The Importance of Light and Energy

A light wave consists of electric and magnetic fields, and fields contain energy. Thus a light wave carries energy with it when it travels from one place to another. If a material object has kinetic energy and moves from one place to another, it must also have momentum, so it is logical to ask whether light waves have momentum as well. It can be proved based on relativity that it does, and that the momentum and energy are related by the equation $U=p/c$, where p is the magnitude of the momentum vector, and $U=U_e+U_m$ is the sum of the energy of the electric and magnetic fields. We can now demonstrate this without explicitly referring to relativity, and connect it to the specific structure of a light wave.

The energy density of a light wave is related to the magnitudes of the fields in a specific way depends on the squares of their magnitudes, E^2 and B^2 , which are the same as the dot products $\mathbf{E}\cdot\mathbf{E}$ and $\mathbf{B}\cdot\mathbf{B}$. Since energy is a scalar, the only possible expres-

sions for the energy densities of the fields are dot products like these, multiplied by some constants. This is because the dot product is the only mathematically sensible way of multiplying two vectors to get a scalar result. (Any other way violates the symmetry of space itself.)

How does this relate to momentum? Well, we know that if we double the strengths of the fields in a light beam, it will have four times the energy, because the energy depends on the square of the fields. We then know that this quadruple-energy light beam must have quadruple the momentum as well. If there wasn't this kind of consistency between the momentum and the energy, then we could violate conservation of momentum by combining light beams or splitting them up. We therefore know that the momentum density of a light beam must depend on a field multiplied by a field. Momentum, however, is a vector, and there is only one physically meaningful way of multiplying two vectors to get a vector result, which is the cross product. The momentum density can therefore only depend on the cross products $\mathbf{E} \times \mathbf{E}$, $\mathbf{B} \times \mathbf{B}$, and $\mathbf{E} \times \mathbf{B}$. The first two of these are zero, since the cross product vanishes when there is a zero angle between the vectors. Thus the momentum per unit volume must equal $\mathbf{E} \times \mathbf{B}$ multiplied by some constant $d\mathbf{p} = (\text{constant})\mathbf{E} \times \mathbf{B} \, d\,v$.

This predicts something specific about the direction of propagation of a light wave: it must be along the line perpendicular to the electric and magnetic fields. We've already seen that this is correct, and that the electric and magnetic fields are perpendicular to each other.

We now only need to find one physical example to fix the constant of proportionality. Indeed, if we didn't know relativity, it would be possible to believe that the constant of proportionality was zero! The simplest example of which I know is as follows. Suppose a piece of wire of length is bathed in electromagnetic waves coming in sideways, and let's say for convenience that this is a radio wave, with a wavelength that is large compared to a gamma wave, so that the fields don't change significantly across the length of the wire. Let's say the electric field of the wave happens to be aligned with

the wire. Then there is an emf between the ends of the wire, which equals and since the wire is small compared to the wavelength, we can pretend that the field is uniform, not curly, in which case voltage is a well-defined idea, and this is equivalent to a voltage difference between the ends of the wire. The wire obeys Ohm's law, and a current flows in response to the wave. Equating the expressions dU/dt and $I\Delta V$ for the power dissipated by ohmic heating, we have for the energy the wave transfers to the wire in a time interval dt .

Note that although some electrons have been set in motion in the wire, we haven't yet seen any momentum transfer, since the protons are experiencing the same amount of electric force in the opposite direction. However, the electromagnetic wave also has a magnetic field, and a magnetic field transfers momentum to (exerts a force on) a current. This is only a force on the electrons, because they're what make the current. The magnitude of this force equals dp/dt , we find for the magnitude of the momentum transferred: We now know both the amount of energy and the amount of momentum that the wave has lost by interacting with the wire. Dividing these two equations, we find, which is what we expected based on relativity. This can now be restated in the form $dp = (\text{constant})\mathbf{E}\times\mathbf{B} dt$.

Note that although the equations $p=U/c$ and $dp = (\text{constant})\mathbf{E}\times\mathbf{B} dt$ are consistent with each other for a sine wave, they are not consistent with each other in general. The relativistic argument leading up to $p=U/c$ assumed that we were only talking about a single thing traveling in a single direction, whereas no such assumption was made in arguing for the $\mathbf{E}\times\mathbf{B}$ form. For instance, if two light beams of equal strength are traveling through one another, going in opposite directions, their total momentum is zero, which is consistent with the $\mathbf{E}\times\mathbf{B}$ form, but not with U/c .

This is what we can call zero point energy or Scalar.

Angular momentum of light waves

For completeness, we note that since light carries momentum, it must also be possible for it to have angular momentum. If you've studied chemistry, here is an example of why this can be important. You know that electrons in atoms can exist in states labeled s , p , d , f , and so on. What you might not have realized is that these are angular momentum labels. The s state, for example, has zero angular momentum. If light didn't have angular momentum, then, for example, it wouldn't be possible for a hydrogen atom in a p state to change to the lower-energy s state by emitting light. Conservation of angular momentum requires that the light wave carry away all the angular momentum originally possessed by the electron in the p state, since in the s state it has none.

Electromagnetic Properties of Material

Different types of matter have a variety of useful electrical and magnetic properties. Some are conductors, and some are insulators. Some, like iron and nickel, can be magnetized, while others have useful electrical properties, e.g., dielectrics, which allow us to make capacitors with much higher values of capacitance than would otherwise be possible. We need to organize our knowledge about the properties that materials can possess, this knowledge that allows us to calculate useful Maxwell's equations.



“An investment in knowledge always pays the best interest.”
- Benjamin Franklin

Chapter 5

Fusion Excel Products and Their Benefits

The Fusion Excel Pendant is a natural energy generation device, which improves the metabolic and circulatory functions of the body to achieve optimal holistic health as well as being a protective device against Electro magnetic radiation and frequencies. The active ingredients inside the Pendant comprise of 76 different natural minerals extracted from volcanic rocks, which are then recombined using nanotechnology and heat fusion methods. Energy medicine sees human beings as networks of complex energy fields that interface with the physical and cellular systems of the body and uses specialized forms of energy to positively affect those energetic systems that maybe out of balance.

The Quantum Pendant works by radiating natural scalar energy, which enters the body of the wearer and is distributed to the areas in need of energy body balance. The wearer also affects a field within approximately 10 feet from the pendant.

Scalar energy has definite positive effects on the body including

1. Increasing the energy level of every single cell in the body by facilitating the entry of nutrients and elimination of wastes from the cells.
2. Converting the water in the body to become smaller molecules micro-clusters, which will have better dissolving, cleansing and healing powers.
3. Neutralizing the harmful effects of external electro-magnetic radiation.
4. Reducing inflammation.
5. Improving brain function by increasing mental focus, enhancing creativity and calming the mind. As well as balancing and stimulating brain waves.

As mentioned previously about Scalar Energy and Quantum Mechanics, every living thing has a cell as its base element. A cell is composed of a molecule which itself is composed of atoms. In these atoms, a small particle called "quantum" is generating waves. Hence the basic unit of all living things is "quantum wave."

Every matter on earth is comprised of atoms. In each atom, we have a neutron, electron (-) and a proton (+). They are in a state of attracting and repulsing each other, which causes vibration. It is this vibration that creates energy.

The principle of Scalar Energy Technology is based on the fact that matter has its own atoms. These atoms have their own energy (wave) pattern and its vibrating manner. Our human body also has a similar energy pattern. Each cell of the body has its own vibration frequency and energy form. The tone and frequency of this product is at a ratio of 6:8. This is the natural frequency of healing in the human body. In the principle of Scalar Energy Technology, this energy from the human body is described as the third form of energy "Subtle Energy" instead of the usual electricity or magnetism.

DNA in cells sends and receives "high coherence" vibration and "chi" which is used to control the interaction of cells. This is how our white blood cell can search for pathogenic microbes and the flow of nutrient or waste in our blood and lymph nodes. All these organic processes are controlled by this signal (vibration) of each cell.

The Mechanism of Scalar Energy Theory

Any matter has a characteristic feature to memorize the energy. With this knowledge, we can embed a specific type of energy (health promoting) into a matter. The most state of the art technology is required for embedding energy into a matter. This technology is derived from the principle of Quantum Theory. The use of Scalar Energy products will neutralize the negative energy in our body. As mentioned in the introduction, Scalar Energy and the quantum reaction of this precise infinite two reverse Hertzian Waves, is instantaneous.

The nano-technology that separates these products from all others is at this moment what makes it the most unique, powerful, life changing product on earth. As previously mentioned the infusion of the 76 minerals, that are bonded using matching electrons, are what make this product unique from any other energy enhancing product. Everything from the Q-link to the energy wand, has some form of energy providing benefits, but none of those can be used to protect you against harmful electro magnetic radiation and frequencies that can bombard the body 24 hours a day 7 days a week.

Benefits of Scalar Energy

- Eliminates the negative effects level of man-made frequencies (60 cps) in the body
- Increases cell energy level to 70-90 Mv, relieves fatigue, tiredness and rigidity (you feel more energize)

- Protects cellular DNA from damage by increasing energy of hydrogen bonds that hold DNA together
- Facilitates nutrient absorption with improved cell wall permeability
- Speeds up the body's detoxification process
- Cleanses and improves blood profiles
- Strengthens immune function up to 149%
- Improves mental focus and mental clarity
- Improves vision
- Regulates blood pressure
- Prevents and reverses cancer cells
- Helps those with insomnia
- Decreases acidifying and increases alkalinity
- Improves hydration for cellular rejuvenation
- Is a natural libido enhancer

Difference Between Scalar Energy and Electrical, Magnetic, Sound & Light Energy

- Scalar Energy is more field like than wave like and it tends to fill the environment. It is two circular waves rotating opposite of each other
- It is capable of passing through solid objects with no loss of intensity
- The Scalar Energy once embedded into an object, the energy will remain in the object indefinitely and can regenerate and repair itself indefinitely
- The effect of Scalar Energy is cumulative, it gets stronger with time
- Scalar Energy is capable of imprinting itself on human DNA, making the hydrogen bonds that bind DNA strand stronger

Life and Health Benefits Offered by Fusion Excel Scalar Energy Products

- Enhances blood circulation, therefore gives additional strength and helps in lowering blood levels profiles and removing clusters of Red Blood Cells
- Improves the cellular charge to an optimal level of the natural frequency of healing
- Enhances immune system
- The energy embedded is said to assist the body in destroying viruses and bacteria
- Assists in detoxification, by assisting the cell in elimination of waste and acidic build up
- Can improve water quality by simply putting the glass of water on top of the pendant and allowing the water to be charged, since water is the best conductor of energy
- Increases energy levels inside the cell and body
- Helps to protect DNA from damage by strengthening the hydrogen bond on the DNA strand
- Helps to retard the aging process, by simply improving circulation and reviving cells
- Helps to fight cancer cells and reverse the acidity and improve the alkalinity
- Helps in improving the body's aura or energy field
- Prevents electro-magnetic waves (or radiations coming from appliances, mobile phones, motor vehicles, electrical wires, wi-fi, etc.) from causing bad effects to the body.
- Improves gas mileage by micro-clustering gas molecules and energizing them for more octane and power in your vehicle

- Reduces the oxidizing of products, improving the lifespan of your food
- Energizes products that we may take as an adjunct to our care such as: vitamins, herbs, necessary medication, etc.
- Reduces inflammation and promotes healing, while improving the mobility of joints
- Improves brain wave patterns promoting deep, restful sleep, relaxation, and energy when needed. This is accomplished by improving the brain wave patterns
- Improves animal well being and calms them as well as improves their overall circulation and body





*"I cannot teach anybody anything. I can only make them think."
- Socrates*

Chapter 6

Case Studies Using Fusion Excel Scalar Energy

The following research and treatment protocols have been performed at my facility The Unlimited Wellness Institute (UWI).

This case 2009-1 begins with a male in his 60's suffering with Tremors and Lyme's Disease for over 5 years with loss of body control, equilibrium, strength, mobility, and energy. He was unable to place his entire left foot down on the ground and had tremors and stiffness and spasm along his left upper and lower extremities. These body signals made it difficult to get the proper amount of rest and rejuvenate.

I undertook a course of care utilizing Chiropractic care, Ayurvedic herbal supplements, physical therapy modalities, stretching and strengthening, with very little improvement. This course of care went on for a few months.

The patient was then placed on a Fusion Excel Scalar Energy Pendant, for a few days. The results were miraculous and life changing for the patient as well as for me. I could immediately see the changes, physically, emotionally and spiritually. This patient revealed that within a short time of placing the pendant on his body in a necklace form, he could place his foot flat on the floor, as opposed to walking on his toes on that side of his body. He then noticed that he could move his legs better. Later on that evening he realized that he was moving much easier and did not feel as rigid and stiff as he was. The biggest changes were after he awoke, he realized that he had gotten the best deep sleep that he had in years! As the day progressed he realized his rigidity had improved drastically and the spasms had eased up quite considerably. During the course of the day he felt more energized and had an appointment at my office on Monday afternoon.

As I prepared for my afternoon shift at my office on a Monday, I was standing outside when I saw my patient's truck coming down the street. I did not know the unbelievable changes he experienced over the weekend, so I stayed to assist him out of his truck. As the truck approached closer to my office, I was shocked to see that it was my patient driving the truck! For the last 2 months, he had a driver every day he came for his appointment! As he got even closer I could see a big smile on his face! He pulled into the parking slot next to my truck and opened the door and jumped down and danced in circles around me! I asked him if he had done anything else besides see me on Friday night and go to that meeting about that pendant on Saturday? He said no and asked me if I thought that the pendant helped him? I told him that I needed to find out more about this product and Scalar Energy and asked him "when was the next meeting?"

Another case 2009-2 that surprised me was when a patient of mine who was 97 years of age at the time, and is now 98 years old, suffered with moist macular degeneration. Now the more that you understand the power of Scalar Energy and the changes that may occur using this energy, as mentioned previously in this book, one of the physiological changes that change is the UN-clumping of cells and micro-clustering or the development of a smaller particle as well as energizing the cells. Macular degen-

eration is an eye disorder that damages the center of the retina, which is called the macula. This makes it difficult to see finer details.

Macular degeneration is caused by damage to the area around blood vessels that supply the macula. This change in the blood vessels damages the macula and will cause vision problems.

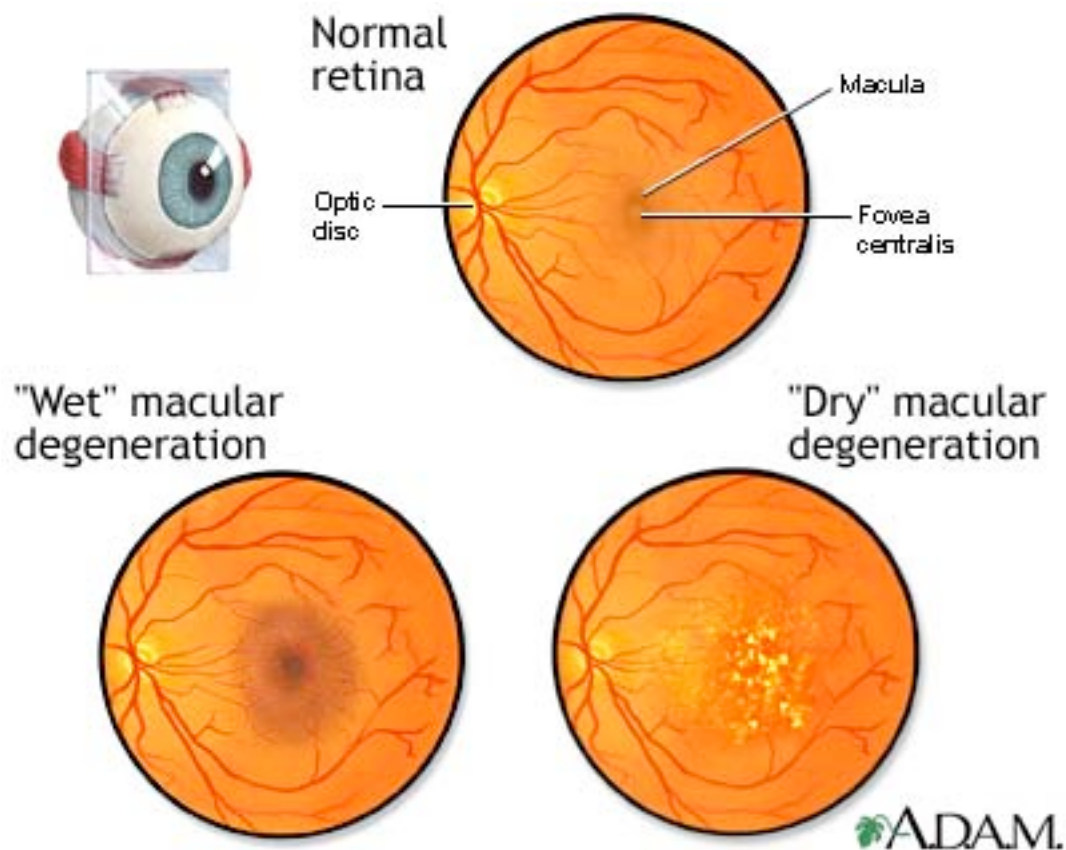


Fig. 6

Two phases of macular degeneration (AMD) exist:

1. Dry macular degeneration occurs when the blood vessels under the macula become thin and brittle. Small yellow deposits, called drusen, form under the macula. As these drusen increase in size and number, they create a blurred and dim spot in

the central vision of the eye. Almost all people with macular degeneration start with the dry form.

2. Wet macular degeneration occurs in only about 10% of people with macular degeneration. Brittle vessels break down and new abnormal and very fragile blood vessels grow under the macula. This is called choroidal neovascularization. These vessels leak blood and fluid, which leads to damage of the macula. Although only about 10 percent of people with macular degeneration have this form, it causes most of the vision loss associated with the condition.

Anytime and anything that would help to improve circulation, reduce inflammation, hydrate tissue, detoxifying cells, as well as improve the immune system, would be beneficial for that person.

This is what I believe occurred with my patient over a 2 week span in my office using herbs, oxygen, glutathione, live cell therapy, chiropractic care and the Fusion Excel Scalar Pendant. His swollen ankles and feet, lower spine and leg pain, equilibrium issues and macular degeneration were all observed on my thorough chiropractic, orthopedic, physical and neurological examination.

My findings on the chiropractic examination indicated a Vertebral Subluxation Complex with spinal degeneration, restricted range of motion in his lumbar spine, decreased sensory detection using the Thermometer, an instrument detecting heat sensitivity emitted from the exiting nerve root at the spinal foramina opening.

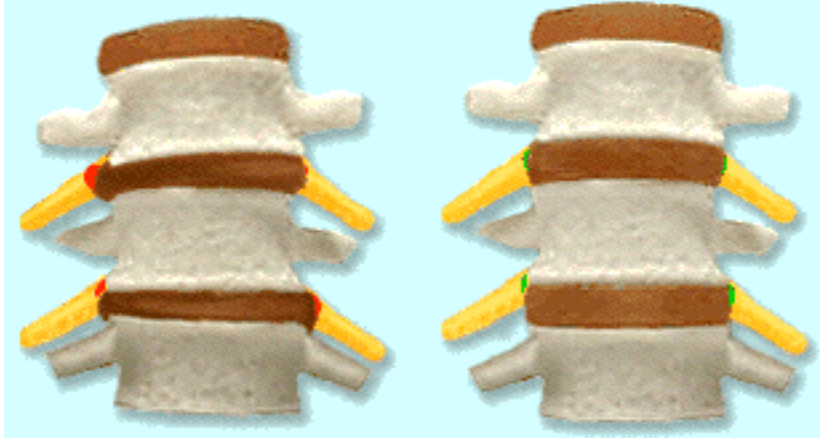


Fig. 7

The figures above indicate a degenerative spine and a normal one. The figure on the left shows a Vertebral Subluxation Complex, complicated by degenerative disc disease. Take note of the loss of disc space with the spinal structure on the left. Notice the difference of the disc height of the figure on the right. When the spinal disc is healthy and hydrated the space is wider and there is more opening for the nerve to exit without any interference.

Scalar energy can help improve circulation to the disc when it UN-clumps red blood cells within the joint as well as reduces inflammation of the structures. When we can improve circulation, change the size of water molecules to help hydrate the tissue cells, it improves the overall repair process by detoxifying and improving the cellular vibration of the cells and therefore accelerating the healing process of the entire area. After about a 2 month span of care at a 3 visit a week schedule of therapy and the utilization of the Scalar pendant, his vision has continued to improved, his swelling of his knee, foot and ankle are gone. His equilibrium has improved and he is able to continue to do things he has loved to do like walking, cleaning the garage and watching his lovely bride walk! Yes, this 97 year old is a newly wed as well!

Another unbelievable reaction with the Fusion Excel Scalar Energy Pendant was the improvement of sleep in many individuals. In most cases of sleep deprivation there

may be anatomical and physiological problems, brain based message problems, chemical imbalances, chronic pain cycles, medication reactions and side effects. There are studies that have indicated on an Electroencephalogram that brain patterns can change, while using the Scalar energy pendant. This energy can alter the brain waves alpha, delta and beta, which can improve sleep patterns and allow deeper, restful sleep. This also will generate more energy upon arising from sleep, where the person feels more alive and energized when they awake from sleep.

Another benefit of the Fusion Excel products is that they are fantastic for food freshness. As mentioned the difference in other so called Scalar products is that during the fusion and melting of the 76 minerals into the products, this enhances the energy stored within the different items and makes that product energized. What that means is that the box that the product comes in, the authentication card in the box as well as the pendant, bracelet, or sports flask is also processed through the Scalar machine moreover give off the energy and the other beneficial reactions.

In one case a patient of mine took the box that his Scalar pendant came in, cut a piece of apple in half and placed one side on just the box and put the other half about 7-10 feet away on another counter. Within 3 days the half that was 7-10 feet away from the box turned brown, dry, crumpled up and looked like a raisin. The other half placed on the box still had its' bright color, freshness and was practically the same color as when he cut it open! This continued for 14 days like that!

Another example of the power of Scalar Energy, was when my wife placed a new bag of carrots on an empty Scalar box in the vegetable bin for more than 3 months! I was shocked to take a bite into the carrots and find that they still had their freshness, taste and color after 90 days! It was truly amazing when my wife used the carrots and cut them to make Lumpia or egg rolls that night. They were crunchy and fresh as ever and I could not believe that these vegetables were still tasty after all that time! The use of Scalar energy can also been seen in improving your gas mileage and octane power for your vehicle. I have had experienced this as well as others that I interviewed.

The gas mileage improved 30-40 % when applying a Scalar product to the gas hose, while pumping gas into your vehicle. The Scalar energy transforms the gas molecule into a micro-cluster and allows smaller molecules to enter the tank. In my experience with my vehicle, normally for the last year my gas tank would fill up and I could get up to 285-275 miles on a full tank of gas. After applying my own Fusion Excel Scalar Pendant on the gas hose, and setting the gas hose fill speed to medium, after I filled my tank, my gas meter read, 385 miles to empty! My tank never got up that high, when it was filled. I went a full week without filling my tank up!

When you have someone who is on medication, herbal supplements, vitamins, dietary or anything they are taking to improve or support their health conditions, if you apply Scalar energy, you again change the size of the molecule of that product. This makes the particle a micro cluster and it is easier and readily absorbable into the body. This can make the body respond faster and more effectively, because the body does not have to breakdown the product to identify, absorb it, distribute and react to it in your nervous system. The products taken do not have to be absorbed, broken down, distributed throughout the entire system over a specific time to be effective. By using Scalar energy we now have a more efficient, effective, and easier way for the body to receive the necessary products it needs to get and stay well.

Case 2009-3, a 76 year old male patient was diagnosed with a suspected cancerous prostate gland. The prostate gland is a chestnut-shaped organ that surrounds the beginning of the male urethra at the base of the bladder, consists of two lobes connected anterior by an isthmus and posterior by a middle lobe lying above and between the ejaculatory ducts, controls the release urine from the bladder, and whose milky fluid secretion is discharged into the urethra during semen emission.

During an examination a PSA test is performed. This is a protease secreted by the Epithelial cells of the prostate gland. Serum levels are elevated in patients with benign prostatic hyperplasia or prostate cancer. The test came back at a 9, which previously read a 2. These standards were unacceptable to the urologist and a biopsy and ultrasound were scheduled for a few weeks down the road. In the mean time since my

background dealt with identifying the herbs that would help reduce inflammation and increase circulation as well as the deal with the prostate gland, I immediately got him on Ayurvedic herbs called Boswelya, Amyla Plex and Ashwaganda. Shortly after that I placed a Fusion Excel Scalar Pendant on him along with a Fusion Excel Scalar Flask.

After 10 days of this protocol, taking these herbs, getting Chiropractic adjustments, wearing his Scalar Pendant and drinking from the Scalar flask, his ultrasound was found to be negative and a few days after the biopsy, he got a clean, clear tissue result. My father has not taken off his pendant and has found that the pendant has also helped clear out his throat and sinus issues he had suffered with usually during the evening. His dry cough and mucous build up in his chest have all subsided since wearing his pendant at night and drinking water from his flask every few hours especially before bedtime.

Case 2010-1, a 70 year old female patient suffered with sinus congestion, mucous production in her chest, severe coughing and a dry throat when she returned from a trip to the Philippines. She had already been wearing a Fusion Excel Quantum Bracelet, so I had her place a pendant on her throat as well. She slept straight through that night. Within 2 days her cough subsided and she got rest for her body to get proper healing.

In both of these instances if you placed your common sense hat on again, if Scalar energy helps reduce inflammation, increase circulation, change the size of water molecules so cells can become hydrated and the detoxification process would improve the immune system, that person has a better opportunity to repair internally. The process of healing is a matter of replacing sick, dehydrated, acidic, and low energy cells with healthier ones.

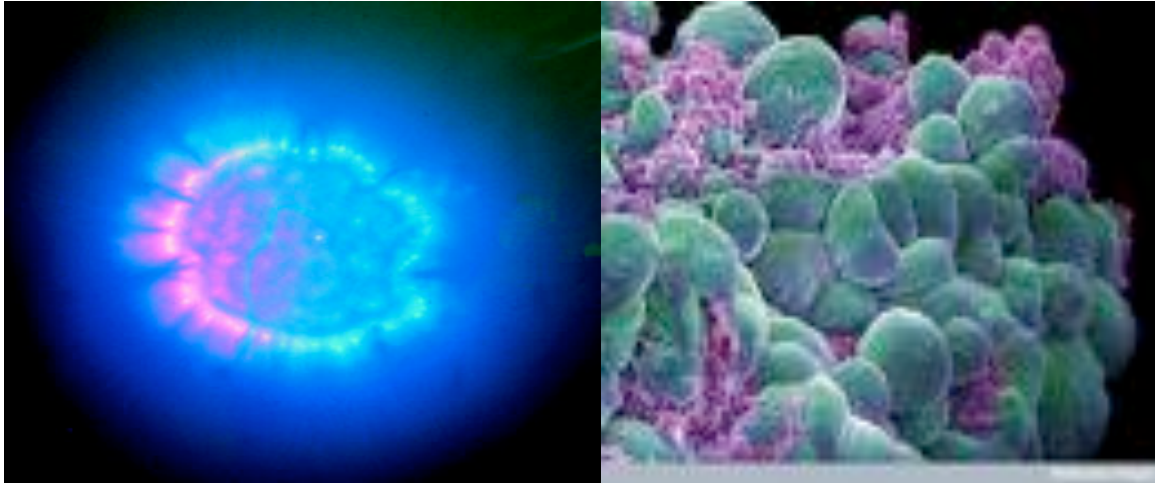


Fig. 8

The figures shown are healthy cells in different views, (Fig. 8) indicate healthy cellular structures. The color and brightness and the symmetry of the cells reflect healthy vibrant cell make up.

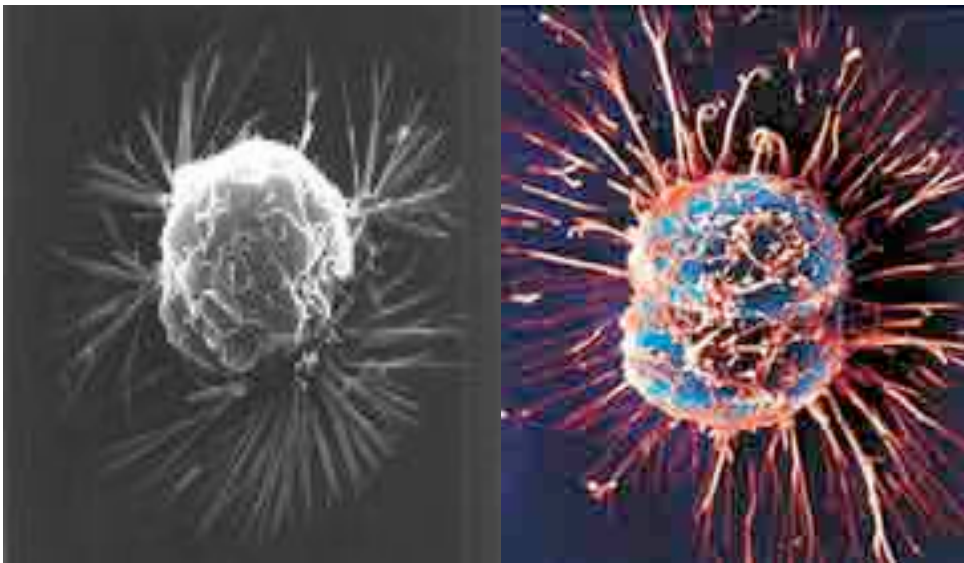
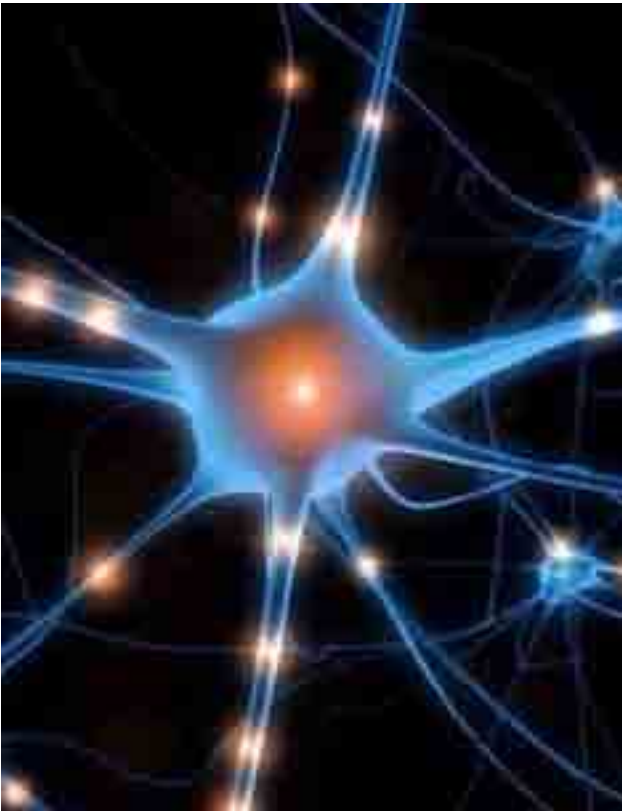


Fig. 9

The cells pictured above are cancerous (Fig. 9). As you can see their bodies are different from the healthy ones shown previously. These cancerous cells are in most instances

acidic, have a low voltage charge usually in the 10-20 Mv range and are dehydrated, have dull color with no brightness and look strangled of life.

The life of a cell determines life of the body and vibrancy will determine energy and immune system function. Scalar energy is powerful and a force for enhancing the cellular charge as well as the vibrancy of the cell, as mentioned before, this can improve hydration of the cell and reduce the acidity of it.



Mitosis is nuclear division plus cytokinesis, and produces two identical daughter cells during prophase, prometaphase, metaphase, anaphase, and telophase.

Interphase is often included in discussions of mitosis, but interphase is technically not part of mitosis, but rather encompasses stages of the cell cycle. Imagine this process with improved and efficient power in all forms.

(see Fig. 10)

Fig. 10 (An example of neuron or brain cell)

The following diagram indicates the formation of the cell and how it is formed. This will allow you to understand the dynamics of cellular structures and development. The multiplication and duplication of the cell is divinely designed in stages. The phases are as follows: (see Fig. 11)

Interphase	The cell is engaged in metabolic activity and performing its prepare for mitosis (the next four phases that lead up to and include nuclear division). Chromosomes are not clearly discerned in the nucleus, although a dark spot called the nucleolus may be visible. The cell may contain a pair of centrioles (or microtubule organizing centers in plants) both of which are organizational sites for microtubules.
Prophase	Chromatin in the nucleus begins to condense and becomes visible in the light microscope as chromosomes. The nucleolus disappears. Centrioles begin moving to opposite ends of the cell and fibers extend from the centromeres. Some fibers cross the cell to form the mitotic spindle.
Prometaphase	The nuclear membrane dissolves, marking the beginning of prometaphase. Proteins attach to the centromeres creating the kinetochores. Microtubules attach at the kinetochores and the chromosomes begin moving.
Metaphase	Spindle fibers align the chromosomes along the middle of the cell nucleus. This line is referred to as the metaphase plate. This organization helps to ensure that in the next phase, when the chromosomes are separated, each new nucleus will receive one copy of each chromosome.
Anaphase	The paired chromosomes separate at the kinetochores and move to opposite sides of the cell. Motion results from a combination of kinetochore movement along the spindle microtubules and through the physical interaction of polar microtubules.
Telophase	Chromatids arrive at opposite poles of cell, and new membranes form around the daughter nuclei. The chromosomes disperse and are no longer visible under the light microscope. The spindle fibers disperse, and cytokinesis or the partitioning of the cell may also begin during this stage.
Cytokinesis	In animal cells, cytokinesis results when a fiber ring composed of a protein called actin around the center of the cell contracts pinching the cell into two daughter cells, each with one nucleus. In plant cells, the rigid wall requires that a cell plate be synthesized between the two daughter cells.
FIG. 11	

Scalar Energy applied to cells and the phases of duplication (Fig. 11) and their chemical makeup will enhance the well being of the cell, in and around it and improve

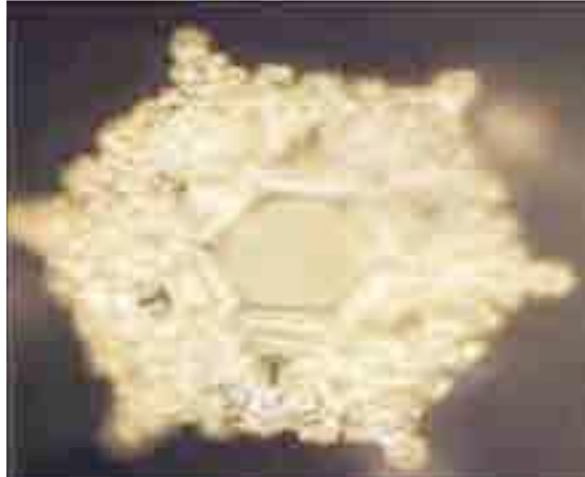
the vibration and overall charge of that cell and therefore improve its immunity and environment in every phase of its existence.

As mentioned in previous scientific texts the DNA strands are all bounded by hydrogen bonds. The stratospheric design of the atom points to the structure of the electron and proton and how the bonds made by DNA are hydrogen, therefore the repulsion of both of these particles within a hydrogen atom, will enhance the strength and chromosomal patterns. The optimal development of the building blocks to life, health and longevity is obtained using the premise of the energizing effect, improved life being and the protective shield from frequencies and radiation is the power of Scalar Energy.

The more we realize how blessed we are to have a form of light and energy with in us as well as around us, we can appreciate even more the power that has been bestowed upon this earth and as living inhabitants of this great planet, we are reaping the benefits of this existence. This energy protects us from harmful effects of Electromagnetic pollution (Fig. 12) and allows our bodies to function optimally.



Fig. 12



“To lose one’s health renders science null, art inglorious, strength unavailing, wealth useless, and eloquence powerless.”

- Herophilus C. 300

Chapter 7

Water and Scalar Energy: Why is it important to you?

As I was growing up on the Jersey Shore in New Jersey, we were so close to the Atlantic Ocean and I could step out off my front porch and walk down to the beach. It always amazed me that the water was so mesmerizing and calming that I would love to just sit on the sand and take in the fresh sea air and just be hypnotized by the water, the curling waves, the beige color sand and the seagulls that flew above. The water would be sparkling with a dark bluish green tint and at times white caps would pop up as the waves made their motions along the shore. When I think back at those times I realized that the water was truly alive. The ocean was buzzing with life and energy and it also is composed of the ion charged particles that penetrated my body and had a calming effect on my entire nervous system.

There are many brilliant science professors and doctors that have dedicated their time to researching water. If you review the work of Dr. Masaru Emoto, and his studies of water and its contribution to life, you will be amazed and fascinated. To see how water crystals change from drab, no organization clusters, to beautiful snowflake shapes and designs is truly magnificent a gift. Scalar energy turns stagnant non-living water into living crystals with energy.

The history of water is that it's the basic element of life and what all living things are composed of. Water is an essential make up of all civilizations and was instrumental if a species existed or became extinct. Early civilizations were developed due to their proximity to a water source to survive. The basic building block of life involves around the molecule H₂O-water.

Fig. 13

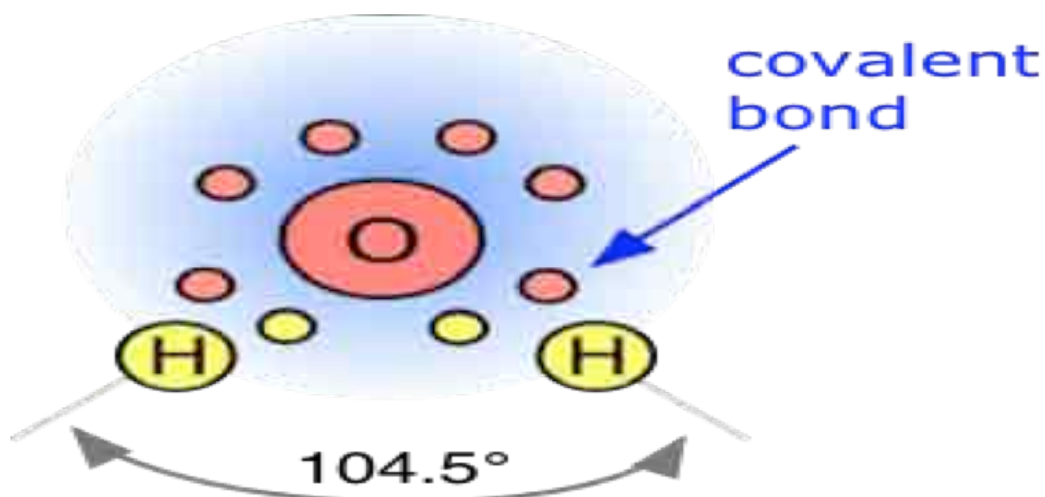
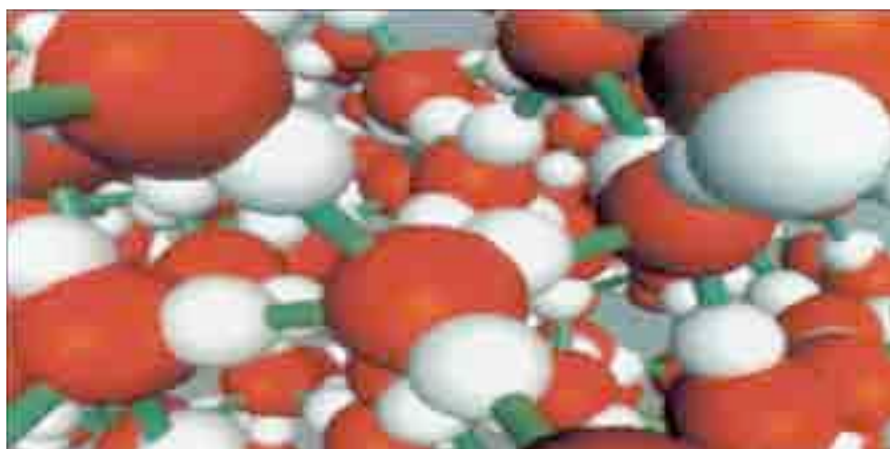


Fig. 14



The diagrams above show hydrogen bonds and the relationship or covalent bonds that are developed with the electrons that surround the hydrogen atom and the oxygen. The angle of 104.5 degrees, exist is to prevent the continuous repulsion from the surrounding electrons. (Fig. 13)

Water is unique because it has neutral qualities with a positive and negative charge. This is why it is a natural buffer due to its makeup and performs a number of vital actions in the body. For one, water regulates body temperature, as well as aid in the detoxification of the cells throughout the lymphatic system. Water also keeps the body in balance by keeping the interstitial fluids in and around the cells, organs and systems, by maintaining the pH level as a slightly alkaline base. This allows the body to balance the acidic production from normal metabolism, as the body's cells secrete acid, the surrounding biochemistry, when alkaline, will normalize and balance the equation.

There is a computer generated nano-scale view of liquid water (Fig 14). The oxygen atoms are red and the hydrogen atoms are white. This view was taken from the lab of Gene Stanley of Boston University. This will illustrate the bonds that make up water and the relationship that hydrogen and oxygen have.

If you looked at the earth and its development we know that the earth is approximately 800 billion years old. We are half way through another cycle before another transformation occurs. When we examine the creation of the universe, hydrogen is the number one element in many ways. Hydrogen was the first element of creation. It is the first element of the periodic chart, the most abundant element in the Universe; it is the element that fuels the Sun and stars, it is the lightest of all gases, and it bonds to other elements in its own unique fashion. Much of the role of hydrogen on Earth is linked to water.

The majority of the earth, if you recollect the pictures from space, is water that covers the earth in comparison to land at about 4:1. The amount of water that inhabits

the earth and how important water is to living organisms it is hard not to believe that all things are derivatives of water.

The idea of atoms can be traced back to the ancient Greek philosophers who deduced that the world must be composed of them. They speculated that although the world appeared extremely complex, all that we were seeing was just different forms of some primordial element. Heraclitus (died 460BC) thought that that element was *water*.

Hydrogen accounts for 88% of the atoms in the Universe, and was one of the three elements, along with helium and lithium, that were produced in the Big Bang. It continues to be the fuel of the stars. At the center of the star like the Sun, the temperature is around 13 million degrees and the density about 200 kilograms per liter. Under such conditions hydrogen will begin to burn, in other words protons fuse to form helium nuclei releasing vast amounts of energy, and radiation as they do so. This radiation takes about a million years to reach the Sun's surface.

The human body consists of about 65% - 75% water and hydrogen constitutes 11% of the weight of water. The human brain consists of 90% water and this makes up a majority of the weight of the brain. Hydrogen is an essential element for life because it is a constituent element of DNA and as such is part of the genetic code, as mentioned previously and diagramed earlier. Hydrogen is the component of almost every living molecule in every living cell. The human body requires around 2 1/2 liters of water, with hydrogen and oxygen, a day to keep itself healthy, half of this is taken as drinks and the other half as food.

Water consists of 2 hydrogen particles and 1 oxygen. It is a natural part of the earth as well as our bodies and research conducted by Dr. Masaru Emoto and his studies on the life of water and the transformation to a beautiful snowflake formation when exposed to Scalar Energy. This is a true testament of the influence of energy in our cells and around them. If you look back at the human body and the major component of it,

you will see that it is water. The ratio of water in the human body begins with the **fetus at 96%, the infant at 80%, an adult at 70%, seniors at 60% and a deceased at 50%**.

When we are properly hydrated, we have much better cellular life as well as increased movement and improved hydration. Most health problems and blood issues such as Sickle Cell Anemia, Aplastic Anemia, Thalassemia, have a lot to do with the dehydration of a cell as well as the inability to carry or store oxygen. In a disease such as Sickle Cell you are also dealing with the genetic code that affects the red blood cell and its hemoglobin component, which is what carries the oxygen within the cell and throughout the body. When Scalar Energy is applied to cells within the body, they are not only more energized, but also could retain oxygen moreover to become less acidic, which can lead to further health problems.

The loss of water or decreased water intake can lead to many health problems in the human body. Dehydration is one of the major causes of health issues and can lead to one of the major factors in the development of a sick cell. The three major changes that contribute to an unhealthy cell, such as cancer or tumor developments are dehydration, acidity and a low Mv charge. These three major components of sickness can all be improved with ***Scalar Energy***.

In my office, **The Unlimited Wellness Institute of Las Vegas**, Nevada USA (www.drflorendo.com), I use oxygen and glutathione, the master antioxidant in the body, for many different types of health conditions. The oxygen from the oxygen concentrator has a water dispenser that I fill with H₂O, which is then attached to either a nasal canula or oxygen mask, that has a dispenser to apply powdered glutathione. Under my water dispenser, I placed a Scalar Energy pendant to energize the water, before it enters into my patient's body.

This small procedure has enhanced the oxygen, energizing it, alkalizing it, and changing the water molecule size, that now my patient's oxygen intake improves within a few minutes as opposed to 30 minutes. This has been verified with a pulse oximetry

reader done before and after administering the Scalarized water directly from the oxygen concentrator. Here you can see the difference in the molecules of water and their normal sequence of formation will usually cluster at 13-15 molecules. After Scalar energy is applied to the water, the molecules are broken down into smaller clusters, about 3-5 molecules, as well as the molecules having a Scalar charge. (Fig. 15)

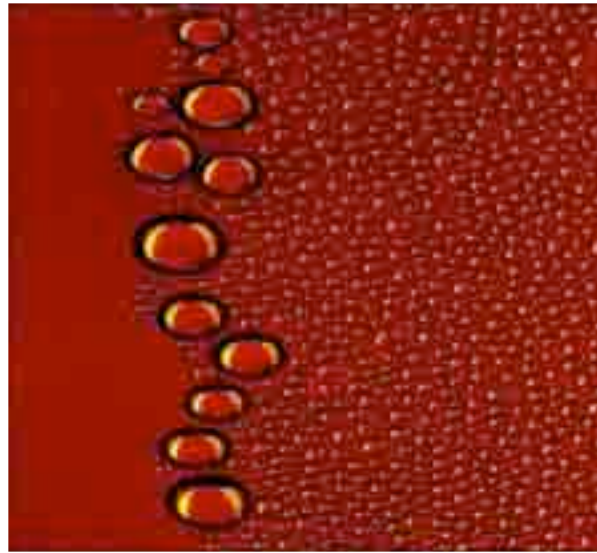


Fig. 15 Example of macro and micro cluster of H₂O

Water is one of the best conductors of energy, which can be used for enhancing hydration of a cell or system, but it can also energize any living entity. If you take this idea and anything and everything that has a water component, you can energize that product. If that product has any water makeup at all, that product will be not only oxygenated, with the additional micro-clustered water molecule and its oxygen element, but also energized and charged as well.

Reviewing again the studies done by hydro scientists, such as Dr. Masaru Emoto, states that water is alive and has memory. In his book “ Hidden Messages of Water”, he identified the healing properties of water when exposed to Scalar. Water can memorize and it also can transform it self when exposed to certain objects and properties. Taking care of your water source should be a top priority for your temple, the human body. Most of the world’s water problems are a result of not valuing the importance of water and acknowl-

edging the power within it. Below is a water molecule exposed to a picture of a cherry blossom.

(Fig. 16) You can see the transformation into a beautiful crystal. God's beauty is everywhere and his energy is pure beauty and love.



Fig. 16

Here is a great visual for the make up of water that surrounds us and makes our lives on earth unique and blessed:

Earth

Earth is the third planet from the Sun and takes 23 hours, 56 minutes to spin on its axis one time. Here are some statistics about our earth

Size: Earth has a diameter of 7,926 miles (12,756 kilometers).

Distance from the Sun: Earth is the third planet from the Sun, which is about 93 million miles (150 million km) away.

Orbit around the Sun: Earth goes around the Sun in 365 and 1/4 days. Every 4 years, the extra quarters add up to one whole day and we add a day to the end of February, creating a leap year.



Rotation: It takes only 23 hours, 56 minutes (1 day) for Earth to spin on its axis one time relative to the stars.

Surface: From space, Earth looks like the blue water world it is. About 70 percent of Earth's surface is covered with water, and 97 percent of all that water is in the salty oceans. Only 3 percent of Earth's water is freshwater – the water we drink.

Earth is covered with mountains, volcanoes, lakes, rivers, and oceans. Most of the surface material is made of rocks – high in silica, iron, and magnesium.

Atmosphere: Earth's atmosphere is a mixture of gasses that becomes thinner as we move away from the planet toward space. Most of the atmosphere is nitrogen (78 percent), oxygen (21 percent), argon, and other gases (1 percent).

Some of the oxygen in Earth's atmosphere has changed over time to form ozone. Earth's high ozone layer filters out the Sun's harmful ultraviolet rays, protecting the living beings on the surface. Ozone at ground level, however is an irritant to eyes, nose, and throats.

Other information: The highest point on Earth's surface is Mount Everest on the border of Nepal and China, at 29,035 feet (8,850 meters).

The deepest known point in Earth's oceans is over 36,000 feet (11,000 meters) deep in the Marianis Trench in the Pacific Ocean.

If we look at the vast development of this great planet and see how this has all been formed by a greater order and the magnificent design of this universe, we will come to realize that the power that developed this magical creation has also gave us the natural gifts that we are benefiting from every second of every moment.



“ We must dare to think about unthinkable things, because when things become unthinkable thinking stops and action becomes mindless.”
- J William Fulbright U. S. Senator

Chapter 8

Practical Uses of the Fusion Excel Quantum Products

What we already know of Scalar Energy and the Quantum Products that Fusion Excel has developed are immense and amazing! Some of the findings I have mentioned in the beginning of this book are just amazing! As a simple guide to other applications of this product lets review some of the health benefits that I have seen in my office as well with my family and acquaintances from around the world.

I have seen with workers that the use of these products for those who work with computers or are exposed to different and numerous frequencies, such as electricians, satellite T.V. installers, and computer printer technicians, have not experienced the fatigue factor, the headaches or dizziness reactions as well. Primarily we have a product that protects the human body and the animal body from the harmful effects of electro

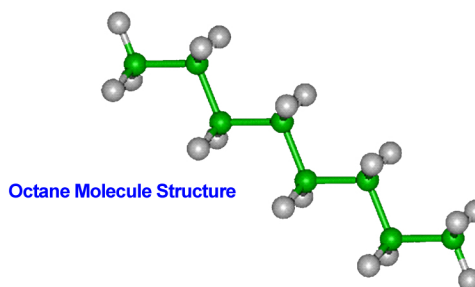
magnetic frequencies and radiation. Therefore, they feel more energy as well as experience body changes immediately after wearing the Fusion Excel Scalar Product.

One of the most amazing things that Scalar Energy does is change the size of molecules making them micro-clustered particles or smaller. When gas is Scalarized into smaller particles, more can fit into the tank! Not only that, but the gas will be also charged with energy! So what this means is: 1. More gas, more mileage! 2. More energy, more octane or power!

In my experience on a driving trip that started in Las Vegas, Nevada and would end in Pasadena, California, my family and I were traveling in a Suburban. My traveling group consisted of my family. We were all wearing our Fusion Excel Quantum Pendants and we also had about 6 pendants in a box in the back near the gas tank in the storage area of the truck. The trip from Las Vegas to Pasadena is about 300 miles.

In most cases, when driving west from Las Vegas, a gas refill would usually occur near midpoint such as Baker or Barstow, California. When I looked down at the gas gauge the needle didn't move much and I thought that it could possibly been broken! We continued to drive and had great conversation, not realizing that we had reached our destination at the hotel in Pasadena. When we got to the valet, my dad asked me how much gas we used? I looked down and the gauge only moved a $\frac{1}{4}$ of the tank! A $\frac{1}{4}$ of a tank of gas in a Suburban with 6 people traveling 77 miles per hour, cruising 300 miles, was amazing!

Another great example of Scalar Energy benefiting every day life!



Case 2010-2, a family came in for a consultation and examination, with two children, who were 4 years old. They were fraternal twins, a boy and girl, and they were born pre-mature in the 7th month. They spent the next few months in an incubator and then suffered with health conditions every month there after! After doses of pharmaceuticals and wait and see outlooks over the span of 4 years, both parents decided to take an alternative route to health and wellness. They entered my office, The Unlimited Wellness Institute in Las Vegas, Nevada, U.S.A.

The 4 year old boy, came into the office with a mask on. He was wearing a mask because he was coughing every 8 seconds and he had not slept for about 5 days. His eyes were blood shot with dark bags under his eyes and he was coughing up dark green mucous. He was miserable and so were his parents for not being able to sleep or help him. My care began with a thorough examination, involving chiropractic, orthopedic, physical and neurological tests. We tested acid/alkaline balance, bodily temperature bilaterally, as well as using an instrument designed by the famous Dr. Michael Kale, called the Thermometer, which is a device that is sensitive to temperature on each side of the spine. When there are breaks in the readings, it will indicate nerve irritation or a vertebral subluxation complex.

After administering the Florendo Synchronized Healing Technique (F.S.H.T.), we sent Tommy home with a Scalar Pendant to wear until his next visit. His parents watched in amazement of the changes that occurred in the next 48 hours. After the first night, he was able to sleep for a few hours. Now that might not seem like a lot, but when you compare this to not sleeping at all for the previous 5 days, a few hours was a big change! The second night he slept for 5 hours straight! Now this was instrumental in allowing his body to heal properly and stimulate the function of his immune system. Scalar has been known to help improve the immune system and help to hydrate the body. He has since this time improved increasingly and is now able to attend school regularly and maintains his health with biweekly tune-ups or adjustments as well as continuously wearing his Fusion Excel Scalar Pendant. He would not leave his bath without it and always wants to wear his new lava rock!

Case 2010-3, another remarkable story occurred when one of our team members in our network referred a friend who was diagnosed with 4 different cancers! They were breast, lung, liver and bone metastases. This person had been undergoing chemotherapy for 6 months and had always suffered with nausea, fatigue and pain after these sessions. After chemotherapy, this person would just go home unable to do much due to her energy depletion.

This individual invested in a pendant days before one of her chemotherapy sessions, in which she always suffered with side effects directly after her chemotherapy. She would just go home and sleep for days before she could even attempt to get up and walk around. To her amazement directly after her chemo sessions, she had the energy to say to her husband that they go walking in the mall, because she did not want to go home! A few days later she came directly to my office with her husband and they asked me why didn't her conventional doctors recommend this product and technology. When I described how new the company was and how short a time this product has been available, they were just in shock of how this energy field helped her with a majority of her problems. This person continued to wear her product and has improved each day since and we pray for a long and healthy life. I have been fortunate and blessed to have people allow my clinic and my unique specialized technique to contribute to their wellness and enhance their innate healing ability with the power of Scalar Energy.

I saw an interesting correlation with specific types of neurological and physical ailments using this unique energy technology. I was fascinated to see the changes that I have documented on a number of patients as well as on individuals who used Fusion Excel products. This one case was very interesting in that it involved a couple of different issues.

Case 2010-4, this particular patient suffered with the inability to stand independently, hand tremors, sleeping disturbances, no bladder control and no basic walking coordination, using a walker at times and was diagnosed with a benign brain tumor. She

entered my clinic looking for some relief with her health problems and I believed that my specialty and type of brain based therapy, Chiropractic, herbal formulas and the F. S.H.T., would stimulate the natural healing ability of the body and bring about homeostasis or balanced health.

My work began with a thorough Chiropractic, Orthopedic, Physical and Neurological examination, followed by an acid alkaline detection test, pulse oximeter readings and blood pressure readings bilaterally, Chinese tongue and fingernail analysis and metabolic testing.

My findings indicated low tissue oxygenation, high acidic body chemistry, positive cerebellum hyperactivity and over firing or over compensating and causing communication problems throughout the cranial nerve distribution and complicated by multiple levels of Vertebral Subluxations.

I began a course of oxygen therapy and utilizing the Fusion Excel Scalar Pendant under the water canister on the oxygen concentrator. Normal tissue oxygen saturation in the body is 98-100. In my studies when the oxygen falls below those numbers, the patient experiences cerebellum deficiencies, muscular spasms, decrease cranial nerve function and the signs and symptoms that correspond to that cranial distribution.

My first step was to place a pendant on her immediately, before anything was done. Within seconds her tremors that she entered with stopped. Her son, who drove her to the office, noticed the tremors stopping immediately. She then noticed that her lower spine and back were getting warm and perspiring. This was due to the increase in circulation and blood flow.

When I first starting performing Brain Based Therapy, using oxygen, glutathione, and unilateral nervous system stimulation, the time that it took me to bring the oxygen levels up would take approximately 30-40 minutes depending on the oxygen count. After placing the Scalar Energy pendant underneath the water dispenser, the time took

only 5-10 minutes. As the water clusters were normally clumped at 13-15 molecules and now after being exposed to Scalar Energy, the clusters become micro and now are clumped at 3-5 molecules! This makes the absorption of the oxygen attached to the water molecule smaller and able to penetrate the cellular membranes in the body faster!

She was able to stand without any support and her tremors have subsided and at this moment her benign tumor has been shrinking, since her last MRI findings. She now is starting to feel alive again being able to move and not have the annoying tremor as well as having more energy than she ever had in 15 years!

Now, I have observed the difference in the effectiveness of the care and the unique protocol and have seen improvement with a number of neurological based problems such as vertigo, ataxia, multiple sclerosis, Parkinson's, and movement disorders.

Another practical use is for sleep disorders, such as insomnia or breathing difficulties. When Scalar Energy is applied to the body, it has been shown to affect brain wave patterns. Sleep disturbances usually occur when the delta, beta, theta and alpha waves are disrupted. Usually when a person is unable to sleep, their beta waves are active and high, when they should be low. The alpha waves are needed during the relaxation phase of sleep, just as you are preparing to fall asleep. The delta waves become active during the sleep phase. Delta waves initiate REM sleep, which is deep healing sleep. Your beta waves and theta waves are highly active during active time of day, when you are doing and organizing your calendar or curriculum. This energy will also help the mind stay focused and enhance concentration.

Case 2010-5, a case study in my office was with a child who at 4 years of age was diagnosed with sleep apnea. On further examination it was determined that his sinus and nasal cavity was clear of any polyps or turbinate's and growths. All though his sleep study showed that with the findings that there was some type of obstruction occurring, they still wanted to perform some invasive procedure on the child.

Before that occurred the parents and I decided a non-invasive approach before the invasive attack! We proceeded with Scalar Energy rubs, with the pendant and lots of Scalar water for drinking. We also placed him on a product called Transfer Factor, which is a formula using colostrum.

Colostrum was designed by nature as part of mother's milk so it helps the young grow up strong and healthy. The first bovine colostrum from the cow's milk was used by people all over the world and throughout history to support the immune system and is a natural, complete whole-food dietary supplement.

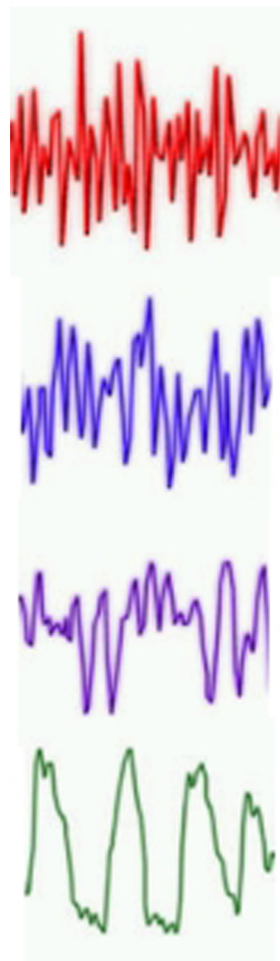
Another benefit of colostrum that it is famous for is its historic reputation in helping the body fight off colds and infection and to stimulate the immune system. My thoughts were to enhance the immune system even more with **Scalar Energy** and using Brain Based Therapy and The Florendo Synchronized Healing Technique (F.S.H.T.), and colostrum, that the body would have a fighting chance against any virus or bacteria as well as the power to repair and rejuvenate.

This little patient has been doing remarkable and has not at this time gone through any surgical procedure! We are continually monitoring his progress and performing re-examinations monthly to update his responses, but so far to good!

Case 2010-6, a female patient in her 60's, was unable to sleep at night, restless, energy less, as well as having extreme stiffness in her legs and had abnormal hormonal balance after a hysterectomy seven years ago. She had bouts of depression as well as sleep disturbances, when she could not sleep straight through the night and would wake up about 3AM and could not fall asleep. Then at 3PM, she would have such fatigue that she had to go lay down and recuperate. After placing the pendant on her after her second visit, she experienced amazing results.

Her sleep patterns changed drastically! She was able to fall asleep and not wake up at 3AM with no fatigue during the day! She works out at the gym 4-5 days a week

and has seen such a difference in her depression and her overall energy and well being. She has changed her entire life and is now molding her husband to follow the same regime of wellness and longevity.



Beta 15-30 Hz

Awake, normal alert consciousness

Alpha 9-14 Hz

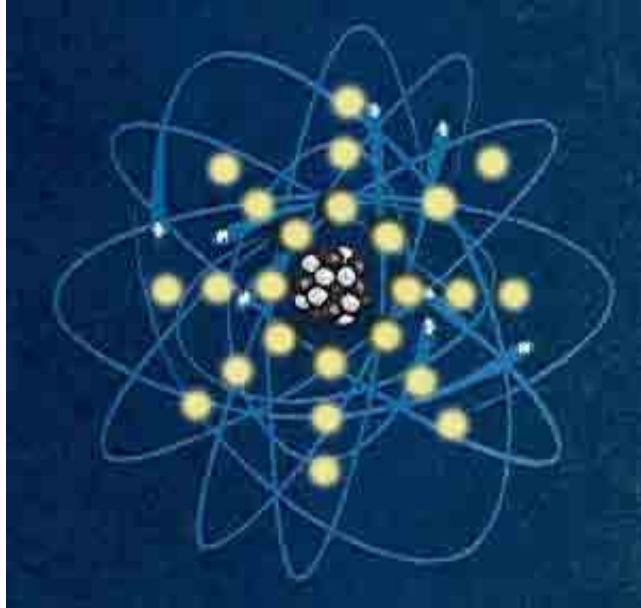
Relaxed, calm, meditation, creative visualisation

Theta 4-8 Hz

Deep relaxation and meditation, problem solving

Delta 1-3 Hz

Deep, dreamless sleep



**“ A vital body is the catalyst to an inspired soul.”
- Dr. John G. Florendo**

Chapter 9

Oxygen Therapy and Fusion Excel Scalar Energy

Our bodies are magnificent beings and spiritual lights of energy. Science has proven that as we travel through this space we are experiencing time. Time is one thing we do not get more of and our value for it is precious. The time it may take for our bodies to recover or maintain homeostasis or level health is also vital and an important part of our existence. The amount of fuel we receive for our bodies is essential in keeping it functioning at an optimal level. The two major fuels our bodies utilize during everyday life that keep our cells alive and rejuvenating are glucose and oxygen. When looking at the makeup of the human cell, we realize that there are three major components, as found by Dr. Jennings research, on how cells die: 1. They are deprived of oxygen: 2. The cells are exposed to an electrical field: 3. They are dehydrated or lack nutrition.

In my office we use oxygen therapy with Scalar Energy, which is administered through an oxygen concentrator. The oxygen from the oxygen concentrator is applied to Scalar and then the oxygen is converted from the water dispenser, while the nitrogen is extracted out of the water and filtered out. The water is then clustered into smaller absorbable molecules and therefore improves the amount of oxygen within the system.

At standard temperature and pressure oxygen is a colorless, odorless gas with the molecular formula O_2 , in which the two oxygen atoms are chemically bonded to each other with a spine triplet electron configuration. This bond has a bond order of two, and is often simplified in description as a double bond or as a combination of one two-electron bond and two three-electron bonds. The electron configuration of the molecule has two unpaired electrons. These orbitals are classified as anti-bonding (weakening the bond order from three to two), so the diatomic oxygen bond is weaker. In normal triplet form, O_2 molecules are paramagnetic, they form a magnet in the presence of a magnetic field – because of the spin magnetic moments of the unpaired electrons in the molecule, and the negative exchange energy between neighboring O_2 molecules. Liquid oxygen is attracted to a magnet to a sufficient extent that, in laboratory demonstrations, a bridge of liquid oxygen may be supported against its own weight between the poles of a powerful magnet.

Single oxygen, a name given to several higher-energy species of molecular O_2 in which all the electron spins are paired, is much more reactive towards common organic molecules. In nature, singlet oxygen is commonly formed from water during photosynthesis, using the energy of sunlight. It is also produced in the troposphere by the photolysis of ozone by light of short wavelength, and by the immune system as a source of active oxygen.

Scalar and oxygen can make an awesome combination in helping the body repair and rejuvenate holistically, without the invasion of pharmaceutical or inorganic substances that the body can re-act to and slow down the natural healing process, which is

governed by the nervous system and the messages that are sent throughout the body to every system within it.

The quality of your life is based on the quality of your cells. Health of your body depends on the 75 trillion cells that are functioning within it. Cytology, the study of cells, notes that there are an infinite amount of energy that keeps us alive. With the proper amount of oxygen, each cell not only performs its own specialized function and produces adenosine triphosphate (ATP) that fuels the body. Although oxygen is not the sole source of ATP in the body, using oxygen to create ATP give 19 times more energy than anaerobic (without oxygen) respiration. It only makes sense that maximizing overall health requires the body to receive the optimum ingredients for ensuring health throughout the body at the cellular level.

Oxygen is by far the largest source of all energy in the body. Cells use oxygen to convert glucose to ATP. Glucose is what is taken from the food we ingest and is broken down as a source of fuel as well. Nutrients that are absorbed into the body must be broken down and assimilated as well as eliminated.

Here are classic findings of what cells need and how important energy plays in keeping us alive.

1. Dr. Otto Warburg- Winner of the 1931 Nobel Prize for his studies in cell respiration. Dr. Warburg believed that there is a direct correlation between a person's health and the level of oxygen in his or her bloodstream. To test his theory, he put rat cells in bell jars with both normal and 60% below normal oxygen levels. In the jars with lower oxygen levels, some cells weakened or died, while others mutated.
2. Dr. Harry Goldblatt- Studies at the Rockefeller Institute support the hypothesis that a lack of oxygen destroys cells. He duplicated Dr. Warburg's experiment, except his findings indicated that under-oxygenated cells developed cancer.

2. Dr. Alexis Carrel- The two-time Nobel Prize winner for his work at the Rockefeller Institute, Dr. Carrel achieved startling results with chicken cells he kept alive in petri dishes, demonstrating his theory that cells will live forever, if they are given their basic needs, and if they are not poisoned by their own environment. This poison would be in the form of pollution, possibly he was thinking about electromagnetic frequency and radiation pollution.

What causes us to become ill? In most cases it is the accumulation of toxins in your blood stream that may cause you to become ill. These toxins may be surrounded by or encapsulated in a virus or bacteria. Could it also be the environment? What about the electrical magnetic fields that we are exposed to?

- A. The most common killer of cells is lack of oxygen.
- B. The disturbance by an electrical field can also be detrimental to cells.
- C. Physical trauma, emotional stress, and chemical exposure in cells will also kill them.

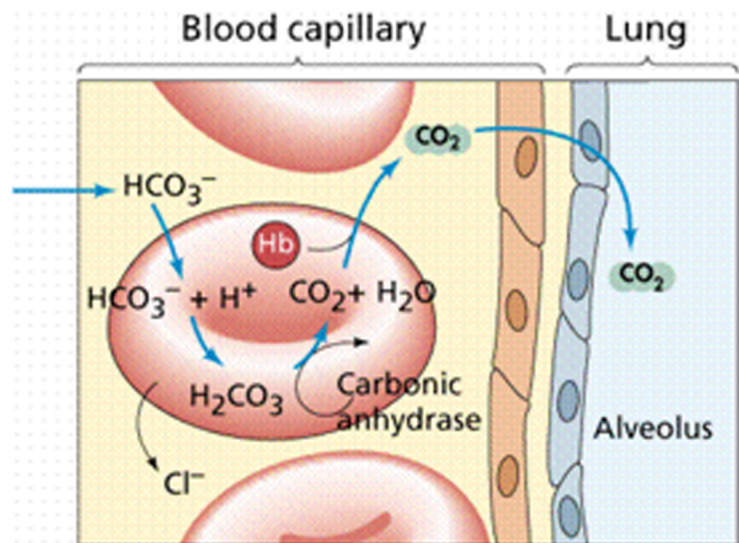
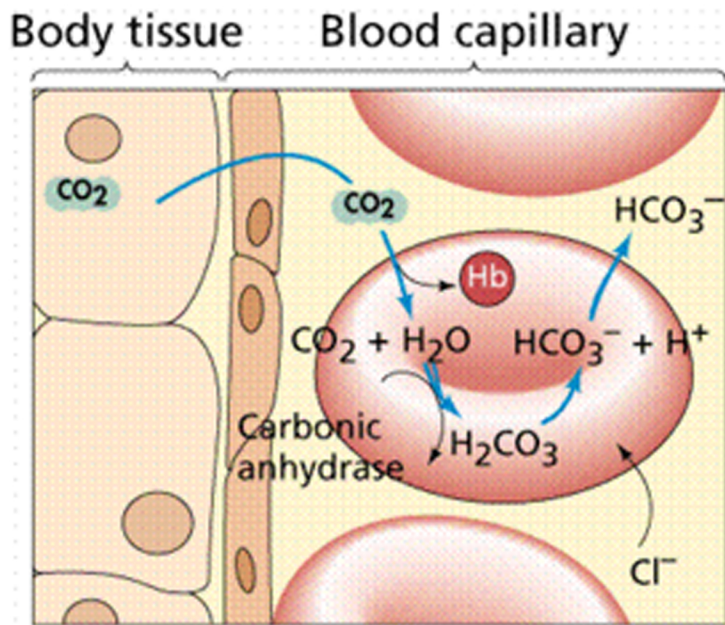
Scalar energy exposed to oxygen will not only energize, but will also change the oxygen structure by increasing the vibration of the electrons within oxygen and therefore increasing it's charge.

This charge is affecting the overall atomic component and therefore affecting the atom itself, the molecule, cell, tissue and system within the being.

The basic building block of our bodies is the cell and the ingredients that make up the cell. As we alter the amounts of water, oxygen, nutrition, stimulation and elimination, we enhance the cells longevity and vibrancy to perform the daily activities of life. Scalar Energy is a power force that can change a human body, vegetable and fruit life, molecules of substances such as gas, supplements, soap, facial cream, and even

drugs! Most importantly is that it can protect the body against harmful electromagnetic frequencies and radiation that we are continually exposed to.

Oxygen and Scalar Energy are equally beneficial for the well-being of your body's cells and must be used to help improve the lives of millions, who suffer with health crisis and disease. Fusion Excel has developed a fantastic product that will lead the wellness revolution into the 21st century.



drugs! Most importantly is that it can protect the body against harmful electromagnetic frequencies and radiation that we are continually exposed to.

Oxygen and Scalar Energy are equally beneficial for the well-being of your body's cells and must be used to help improve the lives of millions, who suffer with health crisis and disease. Fusion Excel has developed a fantastic product that will lead the wellness revolution into the 21st century.



“He that cannot ask cannot live.” - Old Proverb

Chapter 10

Commonly Asked Questions

After being involved with this product and seeing the transformations and results with some of the most difficult cases, I get asked many questions about this product and this technology we call FE Scalar Energy. I have compiled some of the most commonly asked questions and my responses to them. I answer them to the best of my ability and knowledge. For specific conditions or inquiry, you may contact me at any time

Q. How long does the energy last and do I have to wear it all the time?

A. Scalar Energy is an infinite energy and increases in time. The longer you wear it the more reserve charge or energy you accumulate, but also remember it depends also on your environment. If you are in an area over exposed to EMF and EMR then your reserve energy, without the Scalar Energy product, will be reduced. The opposite may happen if you are in an area without any EMF and EMR, then of course you have a better chance of retaining that Scalar charge.

Q. Will I feel or see a difference immediately once I start wearing the product?

A. The reaction to Scalar Energy maybe different in each person. Those who have severe health conditions and have had their condition for a long time, may feel the changes immediately. The longer they have been suffering with their health problems, any change in their system is noticeable. On the other hand, some may not feel anything going on. Their body will be using the energy in a different source, such as homeostasis or balancing their bio-field. Some instances the changes are subtle and are not realized immediately, but seen later. Although they may not see the change, it does not mean there are no changes. Scalar Energy is a subtle energy and just like the effects of gravity, in which we may not see or feel it, it is definitely at work. Scalar is at work and infinite at all moments and there is always something occurring within your existence, even when you aren't feeling or seeing it!

Q. Is it important where I place the products on my body?

A. I have seen with patients that want the best results with specific problems to place the product on or near the site of the issue in most cases. Another important area to place the pendant is below the clavicles in the center of the chest, right above the Thymus gland. The Thymus gland is essential for immunological function of the entire system. In some instances patients take a bath with the pendant in the soaking in the tub to scalar the water and energize the bath, while they are laying in it. I have also seen great results with patients rubbing the area of involvement such as the si-

nus area, the spinal area or legs and knees. Healing is a matter of improving the circulation in order for the body to replace damaged or weak cells with healthier ones. Scalar Energy aids in that process of repair. In severe health cases it is beneficial to use two FE scalar energy products.

Q. How young or old can you be to benefit from FE Scalar Energy?

A. In my experience with Fusion Excels products, the youngest was a fetus and the young mother, who was experiencing headaches, nausea and fatigue as well as the inability to get pregnant. After wearing the Scalar Energy Quantum Pendant, she first got pregnant immediately and after conceiving she never experienced nausea or morning sickness and during her entire pregnancy she was energized and worked until giving birth!

The oldest that I have seen wearing the Quantum Pendant, has been 97 years young! As mentioned earlier in the book, the Quantum Pendant was a contributing factor in enhancing the natural ability of the body to repair and rejuvenate itself. In Chiropractic we call that inborn wisdom or healing ability, Innate Intelligence or God within. This is a subset of Universal Intelligence and the Power that made the Body, is what heals the body.

Q. Who else can benefit from the FE Scalar Energy Pendant?

A. Scalar Energy affects every living being that is exposed to it. I own 3 dogs, Irish Jack Russell Breed, and I witnessed all of them calm down when wearing the extra links from the Scalar Bracelet. Each link can energize up to 15lbs of body weight of the animal. My dogs weigh from 15-30 lbs each, so they each wear either 1-2 links from the bracelet on their collar. I also interchange a pendant for each one, depending on if they are suffering from allergies, joint ailments or overall

hyperactivity! They are Irish Jack Russell's, so they at times can get excited, especially when the office is busy and patients have brought extra snacks for them!



Nami - the Mom; Lucky - the Dad; Yoda - the son

I met with a Veterinarian from the San Francisco area of California one evening after my presentation on Scalar Energy and was surprised to hear his testimonial on how Scalar Energy has helped the thoroughbred race horses he acquires after they have broken down with hoof, leg and tendon injuries. The race horses that do not become famous or are not successful racers, but great animals that are not farmed for breeding are usually over run and injured, with really no where to go, especially if they are suffering with a debilitating injury. In most cases if they do not recover with basic rehabilitation they are euthanized or destroyed with no further need. This doctor takes these horses and has designed a sweatband with bracelet links sewed inside the band, that he places over the hoof area or tendon area of injury. What he has witnessed and experienced is remarkable how these horses have recovered! The recovery time is about 2 weeks and these animals become well and healthy enough to be great family members and live a full life away from racing.

Since that testimonial, I have consulted with a couple and their cat came up lame and could not walk or jump. We placed a link on her and I showed the owners a few pressure point spots along the cat's rear tendons and within a week the cat was 90% improved! She was more playful and energetic now than before the injury. The other 2 cats at home were in for a big surprise to see her jumping, running and just playing again!

I myself experienced the power of Scalar Energy on my own dogs in my office. I have the pleasure of working with 3 healing dogs in my clinic. My older dog, Lucky, one evening, while administering therapy, fell back off of one of the therapy tables onto his shoulder. He yelped and was slightly limping afterwards. He suffered for about 3-5 days, before I remembered about the other animals and their response, so I put on a regular sized pendant on him immediately! Patients could not believe that he was wearing a full pendant, but he responded so fast! Within a day I could see a big difference in him and his jumping ability returned. Everyone was so happy and surprised how fast he recovered with his pendant on! I was grateful to see him moving and working again. We are so blessed to be able to experience the power of this product and what it can do.

Scalar Energy is a force that makes changes to anyone and anything within a circumference of ten feet. Anyone or anything in that field is going to experience the benefit of this product, as well as receiving the protection from harmful EMR and EMF exposure.

Q. If I have a sensitive reaction to the product, does it mean that it is not good for me?

A. No definitely not. Sometimes the body has been a certain way for a long time and when something new is introduced, it may react in a certain way. It is neither good or nor bad for a reaction. We are so brainwashed to think if a symptom appears, that it is necessarily bad. Quite the contrary, when there is a reaction it means something has changed. It might mean also that limited exposure in the beginning might be

wiser, than too much in the very beginning of wearing your product. Little increments of exposure during the day will allow your body to adapt to the energy change and reset itself. Change is good not bad and any bodily reactions are indications of cellular stimulation and body transformation.

Q. If I wear more than one pendant or use the flask, will I see a faster change?

A. In most cases, the more energy the more efficient healing. Whenever you add more energy to anyone or anything. There will be change. There maybe subtle changes; but the body will always respond, just as gravity holds us to the earth, Scalar Energy is always at work.

Q. Can I purchase this product on line, because I see that I can get it really cheap from places like China and Korea?

A. Yes. You can purchase on line at a reputable or designated distributor of the Fusion Excel products. You can also go to the headquarters online at FusionExcel.com and buy product. I do not advise buying the products anywhere else, due to the fact there are so many counterfeits that are being sold at cheap prices that you are just paying for a rock or ceramic mold. People who purchase the imitations are being tricked into thinking this is the original product. These fakes can be detrimental to your health, because you may think you are protected from EMF and EMR, but you won't. The counterfeits were discovered to have highly radioactive material, especially when they originate in China. So buyers beware! If you value your health or your loved one's wouldn't it be wise to buy the most effective and not necessarily the least expensive?

"Your health is your wealth, more than gold or silver." - Mahatma Ghandi

CONCLUSION

The overall experience with the Fusion Excel Scalar Energy pendant is determined also by the person wearing the product, the environment, diet of the individual, organic foods, overall health, hereditary factors, consistency, as well as the mental belief and knowledge that it is the body that does the repairing and healing and nothing else. Every science of healing has what is known as an “avenue of approach.” A medical doctor may inject a drug by a hypodermic needle through the skin or prescribe a pill to be swallowed, which goes into the stomach. Yet there need not be anything wrong with the skin or the stomach. These are but “avenues” through which the drugs gain access to the body.

In energy medicine the energy within the body and the energy that is emitted from the FE Scalar Energy Products are being used as the “avenue.” These aid in the repair process and the body does the rest. Ultimately it is the systems, organs, tissues, cells, molecules and atoms that are the building blocks for healing and the innate wisdom that will ultimately have the final say in any matter.

In my first book “**The Keys to Vital Health**”, you will learn the top 10 secrets to living a healthy lifestyle to improve your overall longevity. One must also use good health sense along with these quantum products, to receive the maximum benefit from the energy that is stimulated within and around the body.

The environment has come to the forefront as a major national and international concern. With the research from the Interphone Study, the disaster in the Gulf of Mexico and the oil catastrophe, and the consecutive years of earthquakes, tsunamis, fires and droughts, people have become extremely concerned about earth’s warming and pollution. The phenomenon caused by excess carbon dioxide that is trapped by the ozone layer results in rising temperatures. They call this the global warming effect. Also included with all the pollution you see, smell, touch and even taste is the unseen, untouched, you cannot smell or feel it pollution: EMF and EMR.

Ultimately, we cannot destroy the external environment without destroying our own internal environment.

Fusion Excel and the Scalar Energy Pendant and Products are one of the keys to vital living. To learn more about these products go to my website: www.drflorendo.com, www.ifusionexcel.com or would like a pre-recorded DVD of a presentation on Scalar Energy please e-mail your order to: unlimitedwellness@gmail.com and or www.fusionexcel.com or the person that introduced you to the product.

*“Give me a lever long enough and a prop strong enough.
I can single-handedly move the world.”*

-Archimedes

These statements presented have not been evaluated by the Food and Drug Administration at this time. This product is not intended to diagnose, treat, cure or prevent disease. Please consult a physician or medical practitioner before using any product for any specific health issue.

AUTOBIOGRAPHY

Dr. John G. Florendo was born in Brooklyn, New York in December 1960. He became interested in health and wellness at a young age, while taking care of his father's migraine headaches and tension. He was able to lift the skull to release pressure on the sub occipital level, not knowing that it directly affected a specific nerve that caused migraine headaches.

This was the catalyst towards a life in chiropractic, neurology, nutrition, sports medicine and energy healing.

Dr. Florendo has a doctorate degree in Chiropractic and nearly 30 years of experience as a facilitator of healing, author, international speaker, teacher and researcher. He is board licensed in the states of Nevada, New Jersey and New York, U.S.A. and internationally in the Philippines. He was just awarded the approval to open the first **Chiropractic and Natural Healing College** in Subic Bay, Philippines in 2011. He is the co-founder along with his beautiful wife Debbie, of the "**Open Heart Foundation**", which develops learning and inspiring programs utilizing Brain Mapping and Master Planning 4 Life, associated with orphanages around the world.

He is the Director of the "*Unlimited Wellness Institute of Las Vegas*" www.drflorendo.com and the developer of the *Florendo Synchronized Healing Technique* (F.S.H.T.) and *Florendo Spinal-Tract Device*, author of the famous health books, "**Keys to Vital Health**" and "**How to Have a Hell of a Body and Still Get to Heaven.**"

Dr. Florendo was awarded the "Chiropractor of the Year Award" in 1995 and developed one of the largest clinics in New Jersey from 1985-2005. He went on to be awarded numerous masters certifications and hosted his own radio program in Las Vegas called "**The Hour of Power, Health is Wealth Program.**" He now conducts research in his clinic on the overall benefits of Brain Based Therapy, Chiropractic, Nutritional Supplementation, Oxygen and Scalar Energy.

" I have devoted my entire life to the essentials of healing. My being is a direct reflection of my dedication to the universal improvement of health and the continuous search for wisdom."

- **Dr. John G. Florendo**

References

ije.oxfordjournals.org

http://cellphones.procon.org/sourcefiles/Interphone_2010.pdf

American Journal of Epidemiology, Dr. Richard Stevens suggests that EMFs and/or light-at-night may be responsible for increased breast cancer rates in industrial countries.

Dr. William Morton of the University of Oregon reports a significant association between extremely low levels of RF/MW radiation possibly from TV towers – and lymphatic leukemia, adenocarcinoma of the uterus and breast cancer among Portland, OR, residents.

The Sea of Energy in Which the Earth Floats

Copyright-1978 Edition: Cosray Research Institute, Salt Lake City, UT

New Study on Cell Phones & Cancer

Increased Risk of Brain Tumor 'Glioma' published : Monday, 17 May 2010

Analysis of Scalar Electromagnetics Technology

Copyright-1990 T.E. Bearden, Pages 53-87

Zero Point Energy

Copyright-1990 T. Henry Moray

Gray Research Institute, Salt Lake City, UT

The Sea of Energy which Earth Floats

Copyright-1990 - T. Henry Moray- Gary Research Institute, Salt Lake City, Utah

The God Particle, If the Universe is the Answer, what is the question

Copyright-1993 Dean Publishing, Quantum Theory

Alice in Quantumland

C-1995 "Atoms in void" pgs. 108-162

How to Teach Physics in your Abs.

C- 2009 Chad Orzel, PhD

Scribner, Simon and Scriber

International Journal of Epidemiology, May 2010, pg. 12

Life: The Science of Biology, 4th Edition, by Sinauer Associates and WH Freeman

Copyright © by Dr. John G. Florendo for The Open Heart Foundation

All rights reserved. No part of this book may be reproduced or transmitted in any form, or by means, electronic or mechanical, including photocopying, recording or by any information storage and retrieval system without written permission except for the inclusion of brief quotations in a review.

These are just a few of the case studies that have benefited from Fusion Excel's Quantum Products. Stay tuned for part 2 of "A Practical Guide to the Benefits of Scalar Energy," for some more amazing results! The Unlimited Wellness Institute is also a research clinic utilizing Dr. Frederick Carrick's and Dr. Michael Johnson's Chiropractic Neurology and Brain Based Therapy to improve overall nervous system function.

Important

The information in this book is intended solely for educational purposes and not recommended as a means of diagnosing or treating an illness. These statements presented have not been evaluated by the Food and Drug Administration at this time. This product is not intended to diagnose, treat, cure or prevent disease. Please consult a physician or medical practitioner before using any product for any specific health issue.

Notes



I AM A MAN
ON AN ULTIMATE MISSION,
SERVING GOD, MY FAMILY AND MANKIND.
MY PURPOSE IN WRITING THIS MANUAL
WAS TO PROVIDE AN EDUCATIONAL TOOL
FOR OTHERS TO UNDERSTAND THE VALUE
AND BENEFITS OF SCALAR ENERGY.
“I AM GRATEFUL TO SEE AND EXPERIENCE
THE TRANSFORMATIONS UTILIZING THIS
DYNAMIC FORCE. FUSION EXCEL PRODUCTS
ARE A NECESSARY ADJUNCT TO IMPROVING
LIFE AND LONGEVITY ”.

Dr. John G. Florendo



US \$19.95 Canada \$21.00



SDN-95764-125

Copyright© 2010 Dr. John G. Florendo



THE
OPEN HEART
FOUNDATION